

## Product datasheet for **CS815509**

### PD1 Negative IHC Control Slides

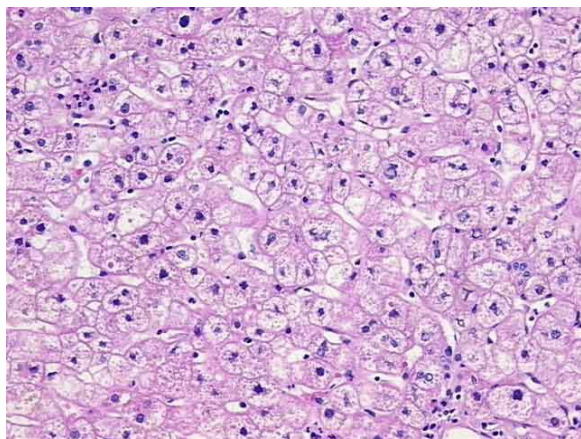
#### Product data:

Product Type: IHC Control Slides (Phase II)

Name: PD1 Negative

Description: PD1 negative tissue 4um section mounted on unstained slide. Available in sets of 2 or 5 slides.

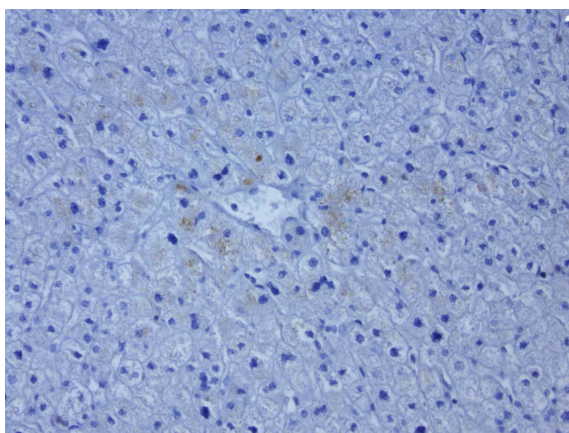
#### Product images:



Hematoxylin and eosin stain of normal liver.



[View online »](#)



Immunohistochemical staining of FFPE liver- normal adjacent; using heat-induced epitope retrieval HIER ACCEL buffer pH8.7 at 120C for 3min , mouse monoclonal antibody CAT# - CE00059 anti-PD1 clone UMAB198 was used at 1:200. No staining seen in the hepatocyte cells of the liver.