

Product datasheet for **CS815128**

Tissue FFPE Sections, Brain

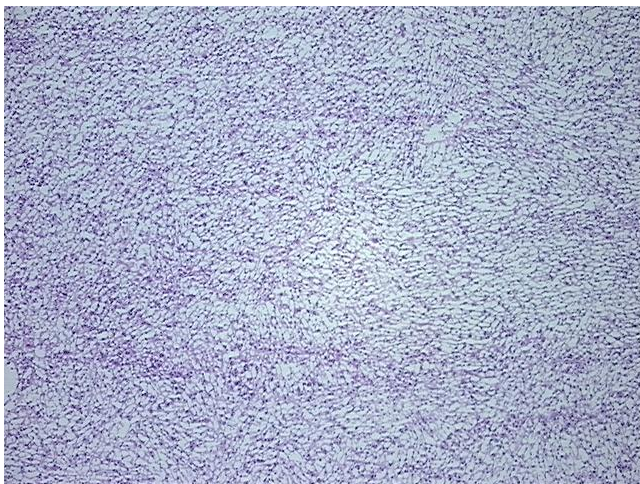
Product data:

Product Type:	FFPE Sections
Disease State:	Cancer
Diagnosis Category:	Brain Cancer
Tissue:	Brain
Frozen Sample ID:	FR00008083
Case ID:	CU0000001983
Tissue of Origin:	Brain
Site of Finding:	Brain
Appearance:	T
Sample Diagnosis (from Pathology Verification):	Oligoastrocytoma, anaplastic
Normal:	0%
Lesional:	0%
Tumor:	100%
Tumor Hypo/Acellular Stroma:	0%
Tumor Hypercellular Stroma:	0%
Necrosis:	0%
Pathology Verification notes from H&E review:	Tumor area: 5 mm x 2.5 mm
CASE Diagnosis (from medical center path report):	Oligoastrocytoma, anaplastic
Age:	41
Gender:	Male
Tumor Grade:	WHO Grade III

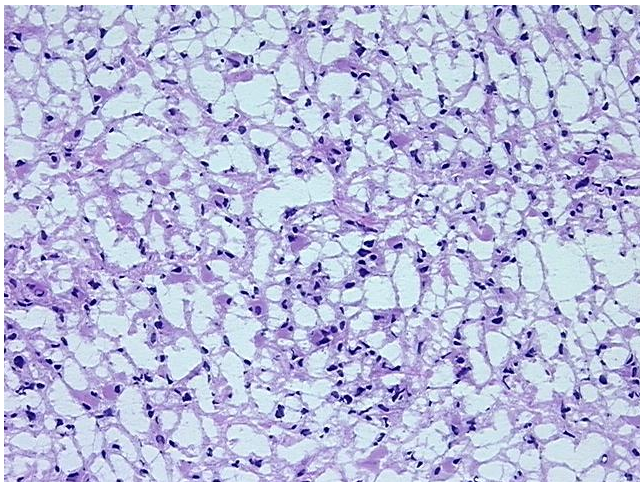


[View online »](#)

Minimum Stage Grouping:	Not Reported
T (Extent of Primary Tumor):	Not Reported
N (Lymph node metastasis):	Not Reported
M (Distant metastasis):	Not Reported
Diagnostic Test Results:	Ki67 ~ MIB1 ! by IHC,Positive; Vimentin ~ VIM ! by IHC,Positive; Glial Fibrillary Acidic Protein ~ GFAP,Positive
Storage:	Store FFPE tissue sections at +4°C.
Stability:	All FFPE tissue sections are stable for 1 year from date of purchase.

Product images:

4x Image



20x Image