

Product datasheet for CS815062

Tissue FFPE Sections, Ovary: bilateral

Product data:

Product Type:	FFPE Sections
Disease State:	Cancer
Diagnosis Category:	Ovarian Cancer
Tissue:	Ovary
Frozen Sample ID:	PA0000549C
Case ID:	CU0000005829
Tissue of Origin:	Ovary: bilateral
Site of Finding:	Ovary: right
Appearance:	T
Sample Diagnosis (from Pathology Verification):	Adenocarcinoma of ovary, papillary serous
Normal:	0%
Lesional:	0%
Tumor:	60%
Tumor Hypo/Acellular Stroma:	25%
Tumor Hypercellular Stroma:	15%
Necrosis:	0%
Pathology Verification notes from H&E review:	Tumor Stroma (Cellular): Desmoplastic reaction; Tumor Stroma (Hypo/Acellular): Hyalinization; Other Features/Comments: Tumor area:13 mm x 3 mm
CASE Diagnosis (from medical center path report):	Adenocarcinoma of ovary, papillary serous
Age:	58
Gender:	Female
Tumor Grade:	FIGO G2: Moderately differentiated



[View online »](#)

Minimum Stage Grouping: IIIC

T (Extent of Primary Tumor): T3c

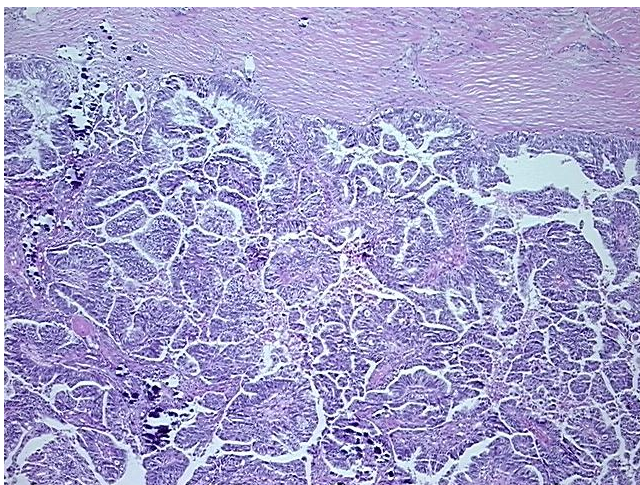
N (Lymph node metastasis): NX

M (Distant metastasis): MX

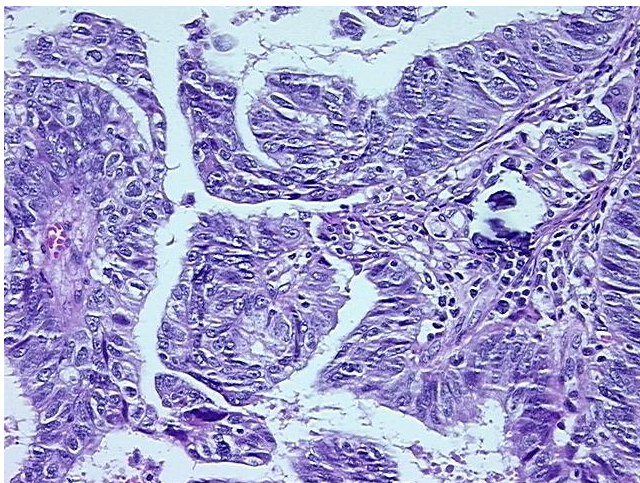
Storage: Store FFPE tissue sections at +4°C.

Stability: All FFPE tissue sections are stable for 1 year from date of purchase.

Product images:



4x Image



20x Image