

Product datasheet for **CS814869**

Tissue FFPE Sections, Heart

Product data:

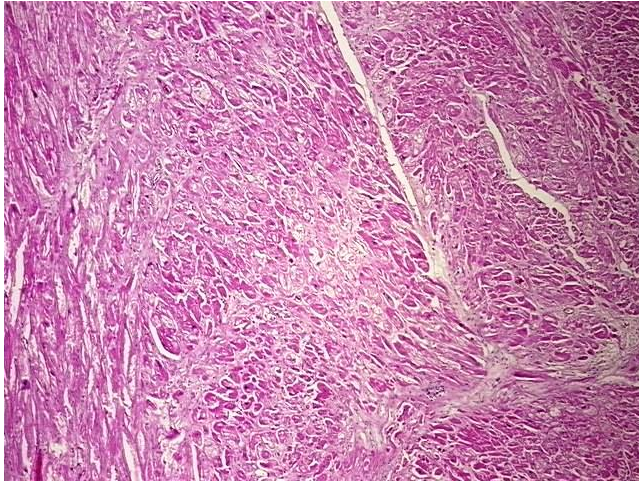
Product Type:	FFPE Sections
Disease State:	Other Disease
Diagnosis Category:	Inflammation (various)
Tissue:	Heart
Frozen Sample ID:	SX000029C1
Case ID:	CX0000000456
Tissue of Origin:	Heart
Site of Finding:	Heart: left ventricle
Appearance:	Lesion
Sample Diagnosis (from Pathology Verification):	Myocyte hypertrophy
Normal:	0%
Lesional:	100%
Tumor:	0%
Tumor Hypo/Acellular Stroma:	0%
Tumor Hypercellular Stroma:	0%
Necrosis:	0%
Pathology Verification notes from H&E review:	Lesion (100%): Myocyte hypertrophy 100%; Non Tumor Structures: 95% Myocardium, 5% Epicardium
CASE Diagnosis (from medical center path report):	Myocardial infarction
Age:	64
Gender:	Female
Storage:	Store FFPE tissue sections at +4°C.



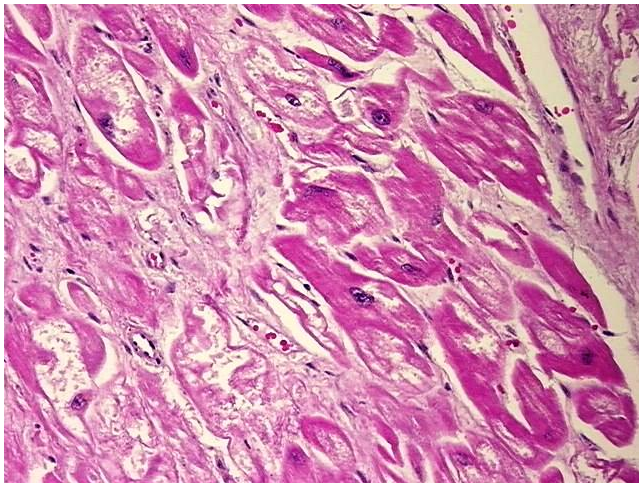
[View online »](#)

Stability: All FFPE tissue sections are stable for 1 year from date of purchase.

Product images:



4x Image



20x Image