

## Product datasheet for **CS814868**

### Tissue FFPE Sections, Heart

#### Product data:

Product Type:	FFPE Sections
Disease State:	Other Disease
Diagnosis Category:	Inflammation (various)
Tissue:	Heart
Frozen Sample ID:	SX000029BE
Case ID:	CX0000000455
Tissue of Origin:	Heart
Site of Finding:	Heart
Appearance:	Lesion
Sample Diagnosis (from Pathology Verification):	Myocyte hypertrophy
Normal:	0%
Lesional:	100%
Tumor:	0%
Tumor Hypo/Acellular Stroma:	0%
Tumor Hypercellular Stroma:	0%
Necrosis:	0%
Pathology Verification notes from H&E review:	Lesion (100%): Myocyte hypertrophy 100%; Non Tumor Structures: 5% Endocardium, 90% Myocardium, 5% Epicardium
CASE Diagnosis (from medical center path report):	Leukemia, acute myeloid
Age:	29
Gender:	Female
Tumor Grade:	Not Reported



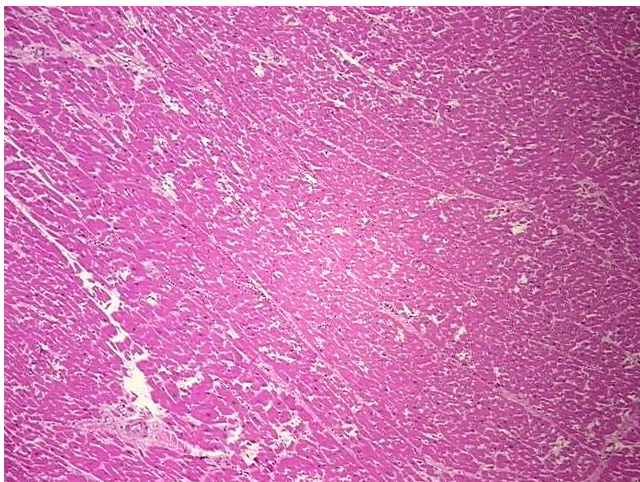
[View online »](#)

Minimum Stage Grouping: Not Reported

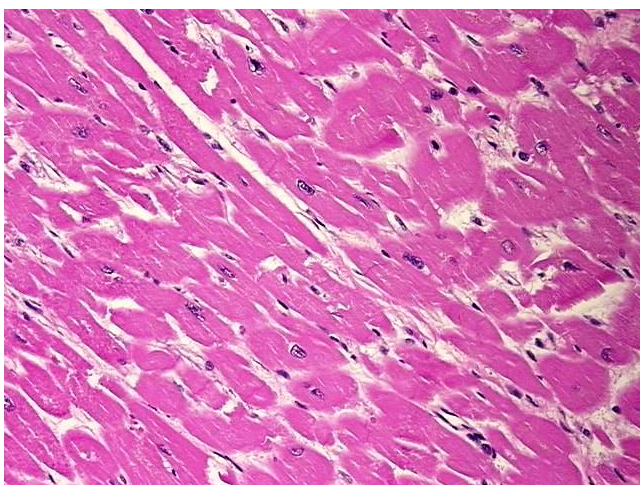
Storage: Store FFPE tissue sections at +4°C.

Stability: All FFPE tissue sections are stable for 1 year from date of purchase.

### Product images:



4x Image



20x Image