

Product datasheet for **CS814853**

Frozen Tissue Sections, Pancreas

Product data:

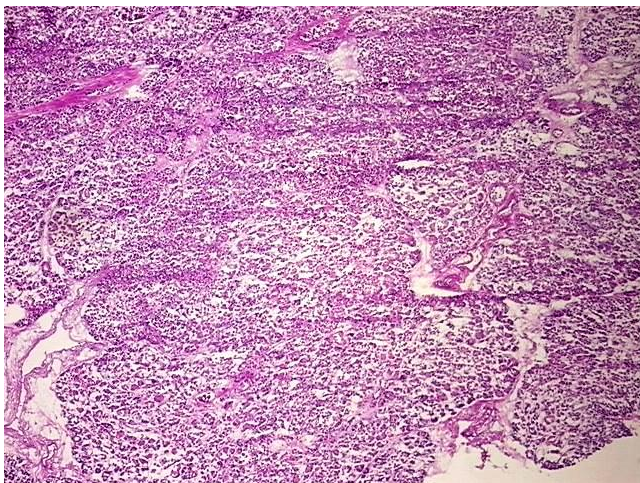
Product Type:	Frozen Sections
Disease State:	Normal
Diagnosis Category:	Normal
Tissue:	Pancreas
Frozen Sample ID:	SX000029A2
Case ID:	CX0000000443
Tissue of Origin:	Pancreas
Site of Finding:	Pancreas
Appearance:	Normal
Sample Diagnosis (from Pathology Verification):	Within normal limits
Normal:	100%
Lesional:	0%
Tumor:	0%
Tumor Hypo/Acellular Stroma:	0%
Tumor Hypercellular Stroma:	0%
Necrosis:	0%
Pathology Verification notes from H&E review:	94% Exocrine epithelium, 5% Endocrine epithelium, 1% Ducts
CASE Diagnosis (from medical center path report):	Within normal limits
Age:	31
Gender:	Male
Storage:	Store frozen tissue sections at -80°C.



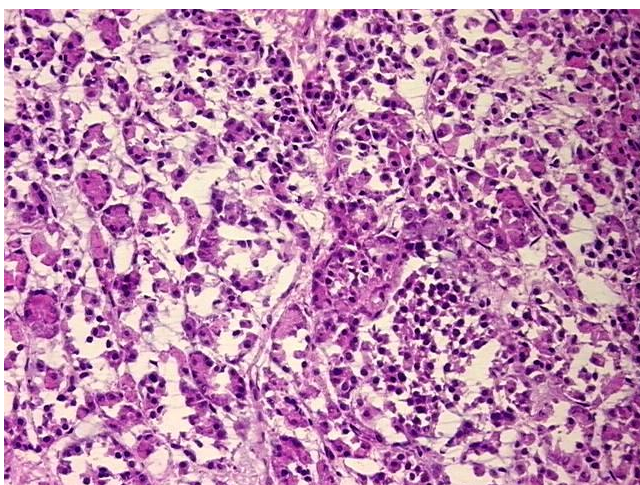
[View online »](#)

Stability: All frozen tissue sections are stable for 1 year from date of purchase if stored at -80°C without repeated freeze/thaws.

Product images:



4x Image



20x Image