

## Product datasheet for **CS814852**

### Frozen Tissue Sections, Esophagus

#### Product data:

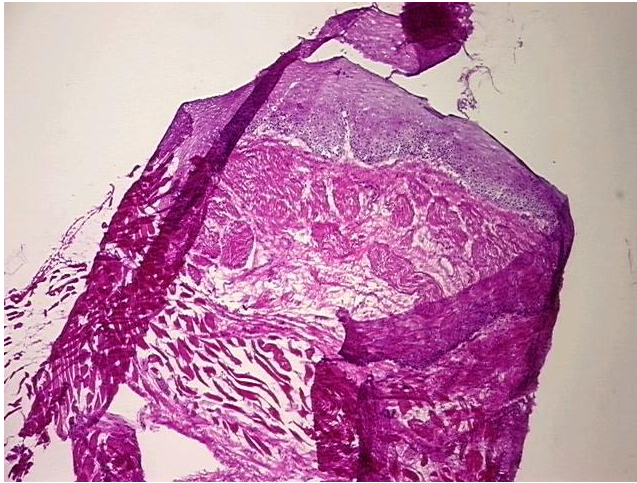
Product Type:	Frozen Sections
Disease State:	Normal
Diagnosis Category:	Normal
Tissue:	Esophagus
Frozen Sample ID:	SX000029B9
Case ID:	CX0000000441
Tissue of Origin:	Esophagus
Site of Finding:	Esophagus
Appearance:	Normal
Sample Diagnosis (from Pathology Verification):	Within normal limits
Normal:	100%
Lesional:	0%
Tumor:	0%
Tumor Hypo/Acellular Stroma:	0%
Tumor Hypercellular Stroma:	0%
Necrosis:	0%
Pathology Verification notes from H&E review:	10% Mucosa, 10% Submucosa, 80% Muscle
CASE Diagnosis (from medical center path report):	Within normal limits
Age:	25
Gender:	Male
Storage:	Store frozen tissue sections at -80°C.



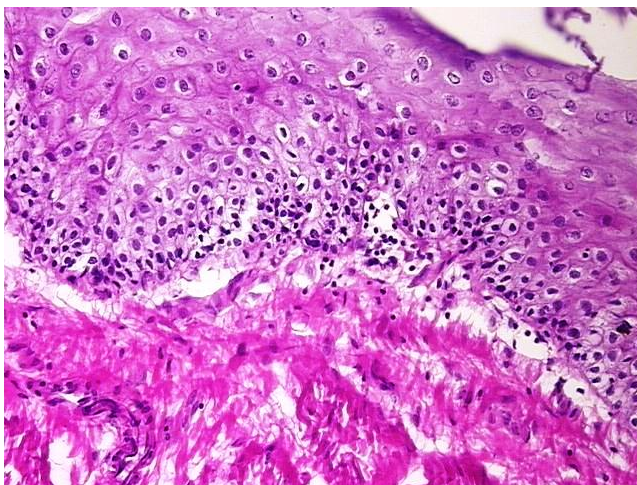
[View online »](#)

**Stability:** All frozen tissue sections are stable for 1 year from date of purchase if stored at -80°C without repeated freeze/thaws.

**Product images:**



4x Image



20x Image