

Product datasheet for **CS814728**

Tissue FFPE Sections, Lung: right lower lobe

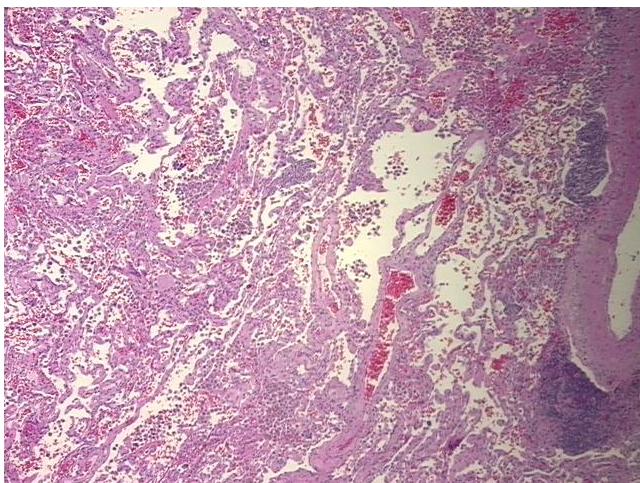
Product data:

Product Type:	FFPE Sections
Disease State:	Other Disease
Diagnosis Category:	Pneumonia
Tissue:	Lung
Frozen Sample ID:	SX0000267D
Case ID:	CX0000000348
Tissue of Origin:	Lung: right lower lobe
Site of Finding:	Lung: right lower lobe
Appearance:	L
Sample Diagnosis (from Pathology Verification):	Pneumonia, interstitial, desquamative
Normal:	0%
Lesional:	100%
Tumor:	0%
Tumor Hypo/Acellular Stroma:	0%
Tumor Hypercellular Stroma:	0%
Necrosis:	0%
Pathology Verification notes from H&E review:	Inflammation: Severe Mixed inflammatory infiltrate; Non Tumor Structures: 80% Alveoli, 10% Bronchioles, 10% Fibrovascular septa
CASE Diagnosis (from medical center path report):	Adenocarcinoma of lung
Age:	58
Gender:	Male
Tumor Grade:	AJCC G2: Moderately differentiated

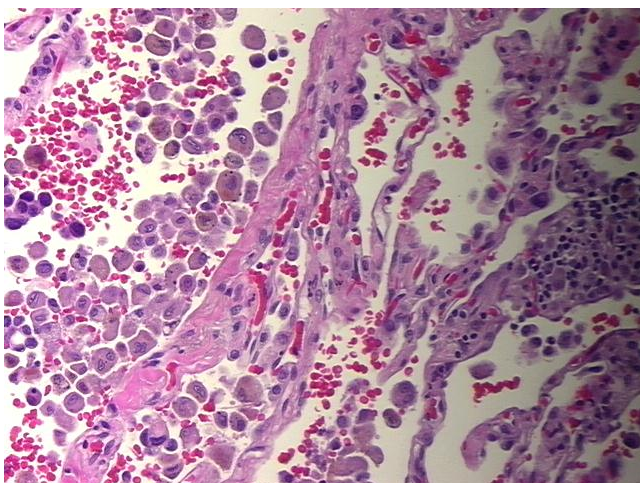


[View online »](#)

Minimum Stage Grouping:	IIIB
T (Extent of Primary Tumor):	T4
N (Lymph node metastasis):	N0
M (Distant metastasis):	MX
Storage:	Store FFPE tissue sections at +4°C.
Stability:	All FFPE tissue sections are stable for 1 year from date of purchase.

Product images:

4x Image



20x Image