

## Product datasheet for **CS814603**

### Tissue FFPE Sections, Tongue

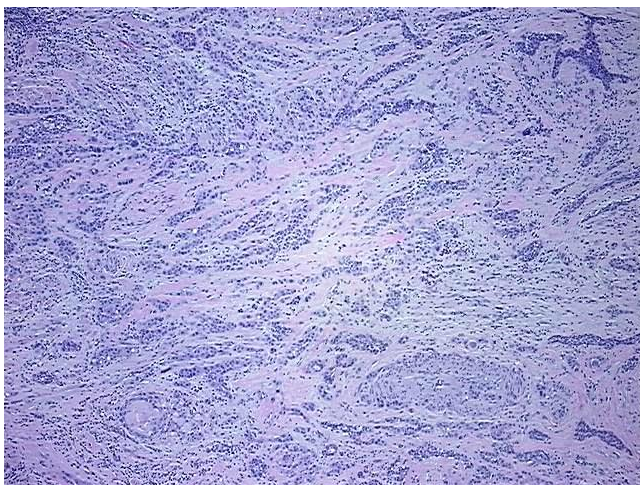
#### Product data:

Product Type:	FFPE Sections
Disease State:	Cancer
Diagnosis Category:	Head and Neck Cancer
Tissue:	Tongue
Frozen Sample ID:	SX00002651
Case ID:	CX0000000205
Tissue of Origin:	Tongue
Site of Finding:	Tongue
Appearance:	Tumor
Sample Diagnosis (from Pathology Verification):	Carcinoma of tongue, squamous cell
Normal:	45%
Lesional:	0%
Tumor:	45%
Tumor Hypo/Acellular Stroma:	0%
Tumor Hypercellular Stroma:	10%
Necrosis:	0%
Pathology Verification notes from H&E review:	Non Tumor Structures: 30% Mucosa, 50% Muscle, 20% Submucosa; Other Features/Comments: Tumor area: 5 mm x 5 mm
CASE Diagnosis (from medical center path report):	Carcinoma of tongue, squamous cell
Age:	68
Gender:	Female
Tumor Grade:	AJCC G2: Moderately differentiated

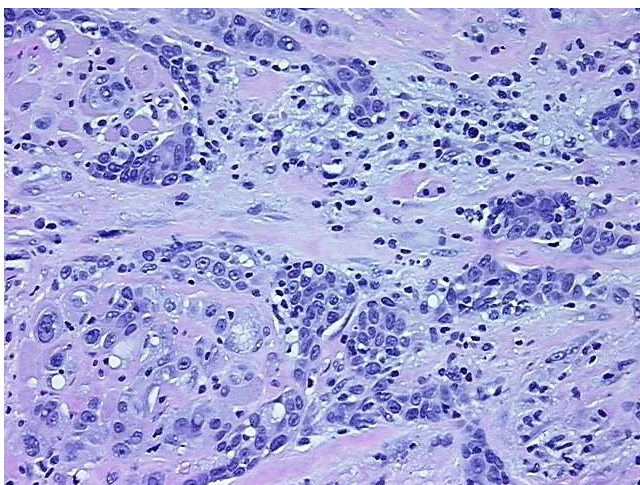


[View online »](#)

Minimum Stage Grouping:	II
T (Extent of Primary Tumor):	pT2
N (Lymph node metastasis):	pN0
M (Distant metastasis):	pMX
Storage:	Store FFPE tissue sections at +4°C.
Stability:	All FFPE tissue sections are stable for 1 year from date of purchase.

**Product images:**

4x Image



20x Image