

Product datasheet for **CS814455**

Frozen Tissue Sections, Ampulla of Vater

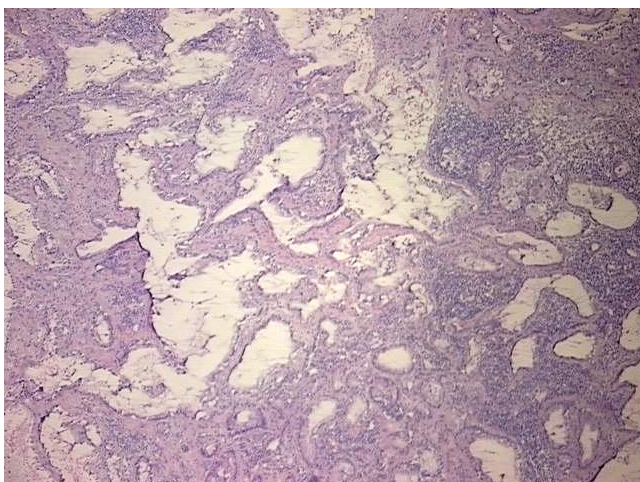
Product data:

Product Type:	Frozen Sections
Disease State:	Cancer
Diagnosis Category:	Ampullary Cancer
Tissue:	Ampulla of Vater
Frozen Sample ID:	SX0000288F
Case ID:	CX0000000165
Tissue of Origin:	Ampulla of Vater
Site of Finding:	Pancreas
Appearance:	Tumor
Sample Diagnosis (from Pathology Verification):	Adenocarcinoma of ampulla of Vater
Normal:	0%
Lesional:	0%
Tumor:	55%
Tumor Hypo/Acellular Stroma:	20%
Tumor Hypercellular Stroma:	20%
Necrosis:	5%
Pathology Verification notes from H&E review:	Tumor Stroma (Cellular): Desmoplastic reaction, Fibroblastic cells, Inflammatory cells; Tumor Stroma (Hypo/Acellular): Desmoplastic reaction; Other Features/Comments: tumor area:6x3 mm
CASE Diagnosis (from medical center path report):	Adenocarcinoma of ampulla of Vater
Age:	54
Gender:	Female

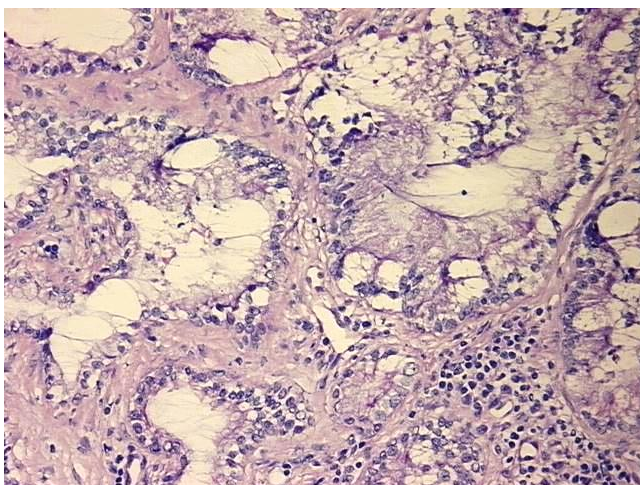


[View online »](#)

Tumor Grade:	AJCC G1: Well differentiated
Minimum Stage Grouping:	IIB
T (Extent of Primary Tumor):	pT3
N (Lymph node metastasis):	pN1
M (Distant metastasis):	pMX
Storage:	Store frozen tissue sections at -80°C.
Stability:	All frozen tissue sections are stable for 1 year from date of purchase if stored at -80°C without repeated freeze/thaws.

Product images:

4x Image



20x Image