

## Product datasheet for CS814447

### Tissue FFPE Sections, Adrenal gland

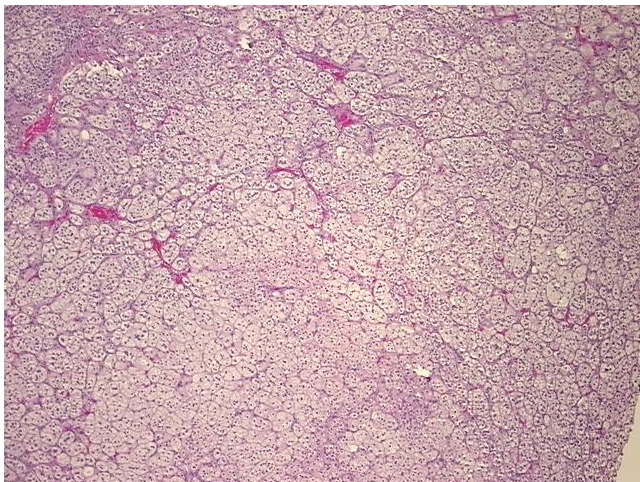
#### Product data:

|                                                   |                           |
|---------------------------------------------------|---------------------------|
| Product Type:                                     | FFPE Sections             |
| Disease State:                                    | Other Disease             |
| Diagnosis Category:                               | Benign Tumors             |
| Tissue:                                           | Adrenal gland             |
| Frozen Sample ID:                                 | SX0000284B                |
| Case ID:                                          | CX0000000141              |
| Tissue of Origin:                                 | Adrenal gland             |
| Site of Finding:                                  | Adrenal gland             |
| Appearance:                                       | T                         |
| Sample Diagnosis (from Pathology Verification):   | Adenoma of adrenal cortex |
| Normal:                                           | 0%                        |
| Lesional:                                         | 0%                        |
| Tumor:                                            | 98%                       |
| Tumor Hypo/Acellular Stroma:                      | 2%                        |
| Tumor Hypercellular Stroma:                       | 0%                        |
| Necrosis:                                         | 0%                        |
| CASE Diagnosis (from medical center path report): | Adenoma of adrenal cortex |
| Age:                                              | 60                        |
| Gender:                                           | Male                      |
| Tumor Grade:                                      | Not Reported              |
| Minimum Stage Grouping:                           | Not Reported              |

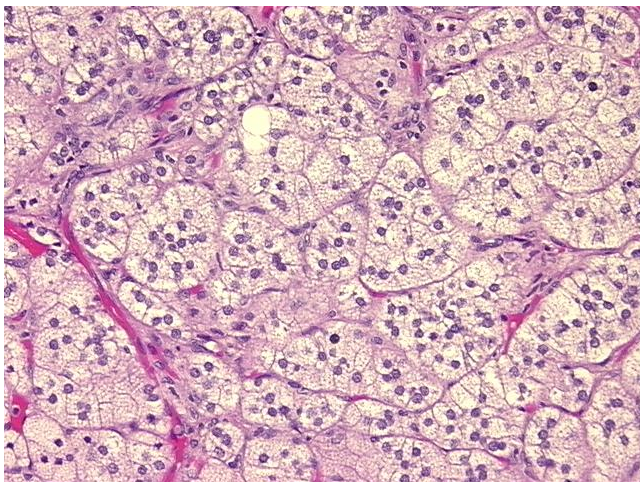


[View online »](#)

|                              |                                                                       |
|------------------------------|-----------------------------------------------------------------------|
| T (Extent of Primary Tumor): | Not Reported                                                          |
| N (Lymph node metastasis):   | Not Reported                                                          |
| M (Distant metastasis):      | Not Reported                                                          |
| Storage:                     | Store FFPE tissue sections at +4°C.                                   |
| Stability:                   | All FFPE tissue sections are stable for 1 year from date of purchase. |

**Product images:**

4x Image



20x Image