

## Product datasheet for CS814421

### Tissue FFPE Sections, Lung

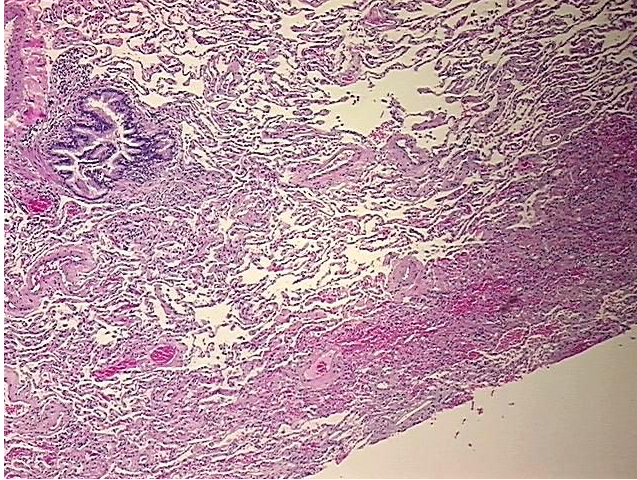
#### Product data:

Product Type:	FFPE Sections
Disease State:	Other Disease
Diagnosis Category:	Chronic Obstructive Pulmonary Disease (COPD)
Tissue:	Lung
Frozen Sample ID:	PA0000BE11
Case ID:	CU0000018849
Tissue of Origin:	Lung
Site of Finding:	Lung
Appearance:	Lesion
Sample Diagnosis (from Pathology Verification):	Emphysema
Normal:	0%
Lesional:	100%
Tumor:	0%
Tumor Hypo/Acellular Stroma:	0%
Tumor Hypercellular Stroma:	0%
Necrosis:	0%
Pathology Verification notes from H&E review:	No normal architecture in lesional component
CASE Diagnosis (from medical center path report):	Adenocarcinoma of lung
Gender:	Not specified
Storage:	Store FFPE tissue sections at +4°C.
Stability:	All FFPE tissue sections are stable for 1 year from date of purchase.

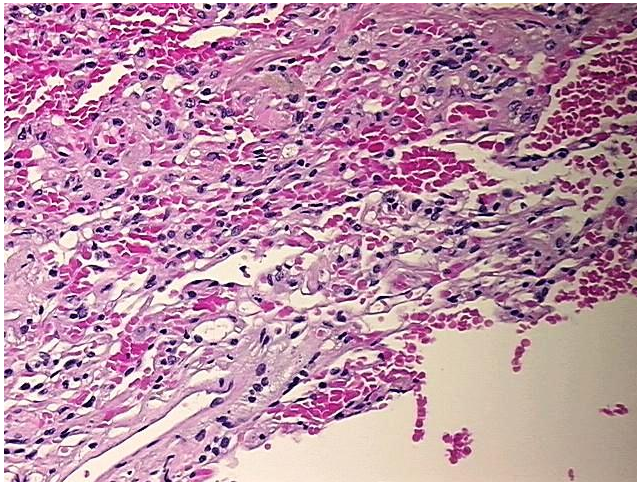


[View online »](#)

Product images:



4x Image



20x Image