

Product datasheet for **CS814390**

Tissue FFPE Sections, Ovary: left

Product data:

Product Type:	FFPE Sections
Disease State:	Cancer
Diagnosis Category:	Ovarian Cancer
Tissue:	Ovary
Frozen Sample ID:	PA0F336B0B
Case ID:	CU0000018841
Tissue of Origin:	Ovary: left
Site of Finding:	Fallopian tube
Appearance:	T
Sample Diagnosis (from Pathology Verification):	Carcinoma of ovary, papillary serous
Normal:	80%
Lesional:	0%
Tumor:	10%
Tumor Hypo/Acellular Stroma:	0%
Tumor Hypercellular Stroma:	10%
Necrosis:	0%
Pathology Verification notes from H&E review:	Tumor: Spread to fallopian tube: Present, serosa only; Non Tumor Structures: 10% Mucosa, 90% Muscle
CASE Diagnosis (from medical center path report):	Carcinoma of ovary, papillary serous
Age:	64
Gender:	Female
Tumor Grade:	FIGO G2: Moderately differentiated



[View online »](#)

Minimum Stage Grouping: III B

T (Extent of Primary Tumor): T3b

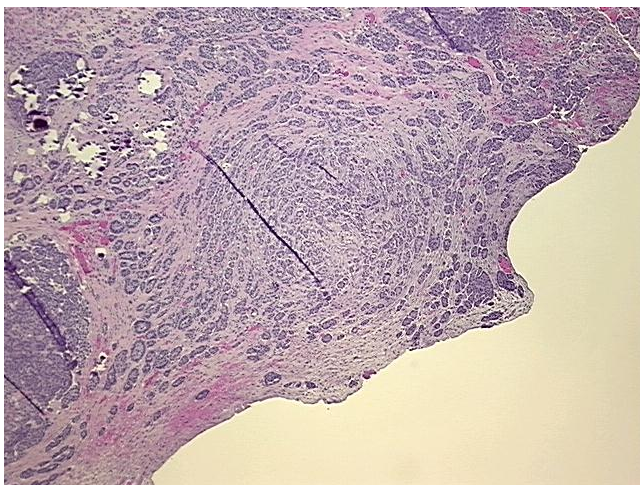
N (Lymph node metastasis): NX

M (Distant metastasis): MX

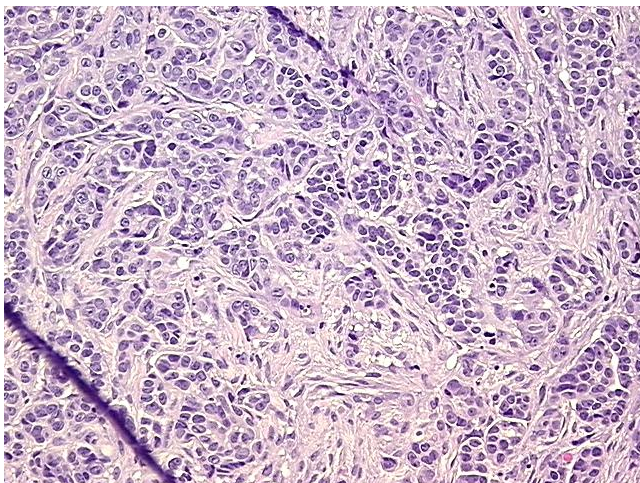
Storage: Store FFPE tissue sections at +4°C.

Stability: All FFPE tissue sections are stable for 1 year from date of purchase.

Product images:



4x Image



20x Image