

Product datasheet for **CS814328**

Tissue FFPE Sections, Lymphoid tissue

Product data:

Product Type:	FFPE Sections
Disease State:	Cancer
Diagnosis Category:	Lymphoma
Tissue:	Lymphoid tissue
Frozen Sample ID:	PA0000BD5B
Case ID:	CU0000018822
Tissue of Origin:	Lymphoid tissue
Site of Finding:	Soft tissue
Appearance:	T
Sample Diagnosis (from Pathology Verification):	Lymphoma, large B-cell, diffuse
Normal:	10%
Lesional:	0%
Tumor:	90%
Tumor Hypo/Acellular Stroma:	0%
Tumor Hypercellular Stroma:	0%
Necrosis:	0%
CASE Diagnosis (from medical center path report):	Lymphoma, large B-cell, diffuse
Age:	89
Gender:	Female
Tumor Grade:	Not Reported
Minimum Stage Grouping:	IIE

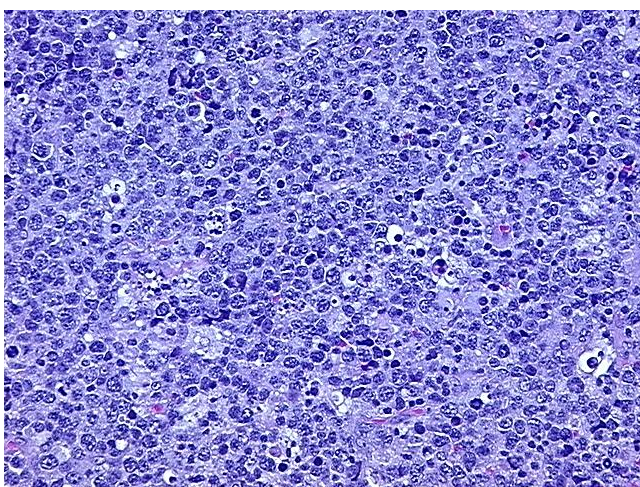


[View online »](#)

T (Extent of Primary Tumor):	Not applicable
N (Lymph node metastasis):	Not applicable
M (Distant metastasis):	Not applicable
Diagnostic Test Results:	Ki67 ~ MIB1 ! by IHC,Positive; BCL2 oncoprotein ! by IHC,Positive
Storage:	Store FFPE tissue sections at +4°C.
Stability:	All FFPE tissue sections are stable for 1 year from date of purchase.

Product images:

4x Image



20x Image