

## Product datasheet for CS814282

### Tissue FFPE Sections, Ovary: left

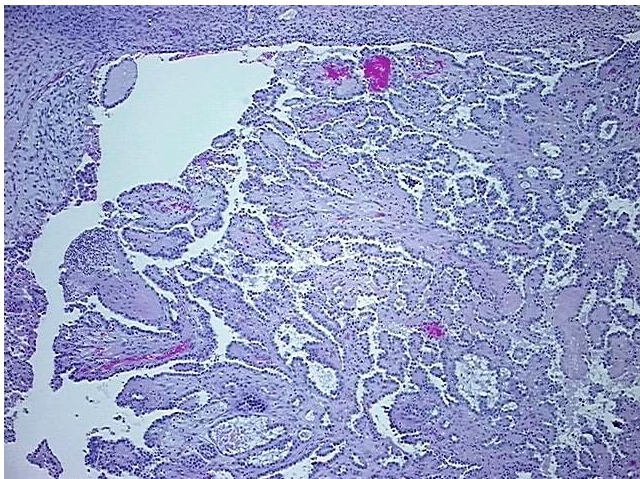
#### Product data:

Product Type:	FFPE Sections
Disease State:	Cancer
Diagnosis Category:	Ovarian Cancer
Tissue:	Ovary
Frozen Sample ID:	PA0000B822
Case ID:	CU0000018807
Tissue of Origin:	Ovary: left
Site of Finding:	Ovary: left
Appearance:	Tumor
Sample Diagnosis (from Pathology Verification):	Carcinoma of ovary, clear cell
Normal:	30%
Lesional:	0%
Tumor:	60%
Tumor Hypo/Acellular Stroma:	5%
Tumor Hypercellular Stroma:	5%
Necrosis:	0%
Pathology Verification notes from H&E review:	Tumor Stroma (Cellular): Desmoplastic reaction; Tumor Stroma (Hypo/Acellular): Fibrosis; Other Features/Comments: Tumor area: 13 mm x 2 mm
CASE Diagnosis (from medical center path report):	Carcinoma of ovary, clear cell
Gender:	Not specified
Storage:	Store FFPE tissue sections at +4°C.
Stability:	All FFPE tissue sections are stable for 1 year from date of purchase.

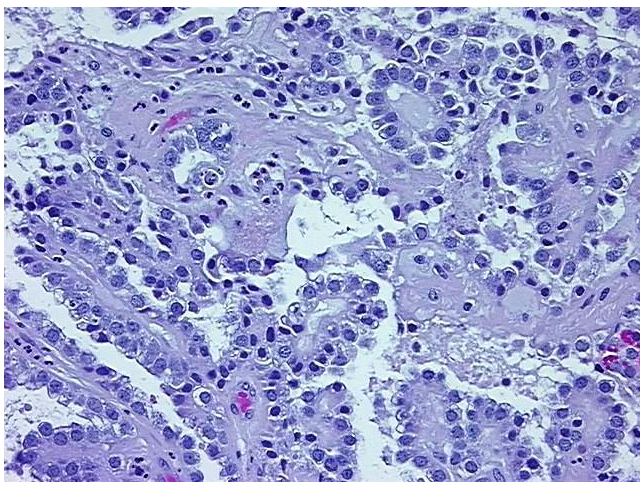


[View online »](#)

Product images:



4x Image



20x Image