

Product datasheet for **CS814272**

Tissue FFPE Sections, Lung: left upper lobe

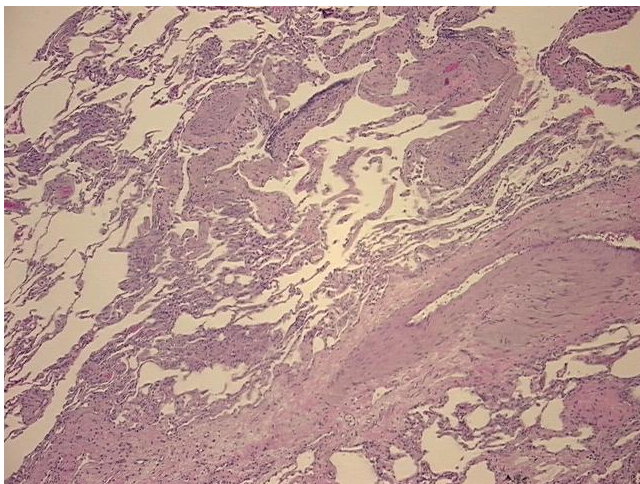
Product data:

| | |
|---|---|
| Product Type: | FFPE Sections |
| Disease State: | Other Disease |
| Diagnosis Category: | Pneumonia |
| Tissue: | Lung |
| Frozen Sample ID: | PA0F336952 |
| Case ID: | CU0000018804 |
| Tissue of Origin: | Lung: left upper lobe |
| Site of Finding: | Lung: left upper lobe |
| Appearance: | L |
| Sample Diagnosis (from Pathology Verification): | Pneumonia, post-obstructive |
| Normal: | 0% |
| Lesional: | 100% |
| Tumor: | 0% |
| Tumor Hypo/Acellular Stroma: | 0% |
| Tumor Hypercellular Stroma: | 0% |
| Necrosis: | 0% |
| Pathology Verification notes from H&E review: | No normal architecture in lesional component |
| CASE Diagnosis (from medical center path report): | Carcinoma of lung, large cell, neuroendocrine |
| Age: | 59 |
| Gender: | Female |
| Tumor Grade: | AJCC G3: Poorly differentiated |

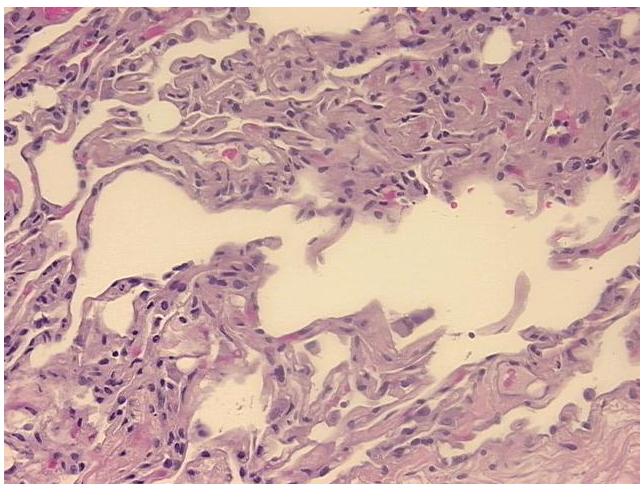


[View online »](#)

| | |
|------------------------------|--|
| Minimum Stage Grouping: | IB |
| T (Extent of Primary Tumor): | T2 |
| N (Lymph node metastasis): | N0 |
| M (Distant metastasis): | MX |
| Diagnostic Test Results: | Neuron specific enolase ~ NSE ! by IHC,Positive, focal; Synaptophysin ~ SYN ! by IHC,Positive, focal; Chromogranin A ~ Parathyroid secretory protein 1 ! by IHC,Negative |
| Storage: | Store FFPE tissue sections at +4°C. |
| Stability: | All FFPE tissue sections are stable for 1 year from date of purchase. |

Product images:

4x Image



20x Image