

## Product datasheet for CS814147

### Tissue FFPE Sections, Lymphoid tissue

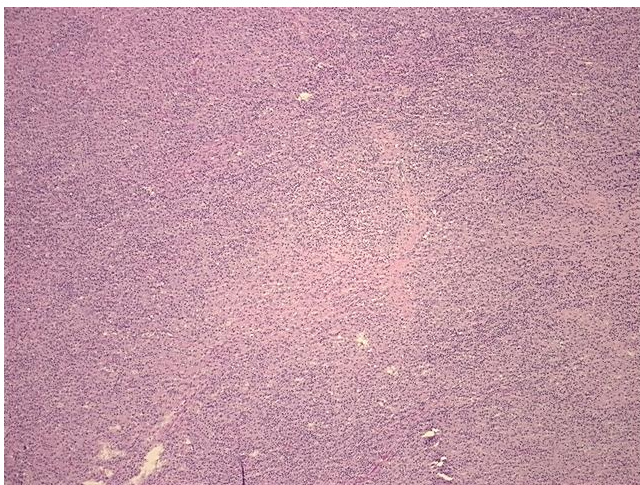
#### Product data:

Product Type:	FFPE Sections
Disease State:	Cancer
Diagnosis Category:	Lymphoma
Tissue:	Lymphoid tissue
Frozen Sample ID:	PA0000B78B
Case ID:	CU0000018764
Tissue of Origin:	Lymphoid tissue
Site of Finding:	Lymph node
Appearance:	T
Sample Diagnosis (from Pathology Verification):	Lymphoma, Hodgkin, nodular sclerosing
Normal:	0%
Lesional:	60%
Tumor:	38%
Tumor Hypo/Acellular Stroma:	2%
Tumor Hypercellular Stroma:	0%
Necrosis:	0%
Pathology Verification notes from H&E review:	Non Tumor Structures: 100% Reactive lymphocytes
CASE Diagnosis (from medical center path report):	Lymphoma, Hodgkin, nodular sclerosing
Age:	44
Gender:	Male
Tumor Grade:	Not Reported

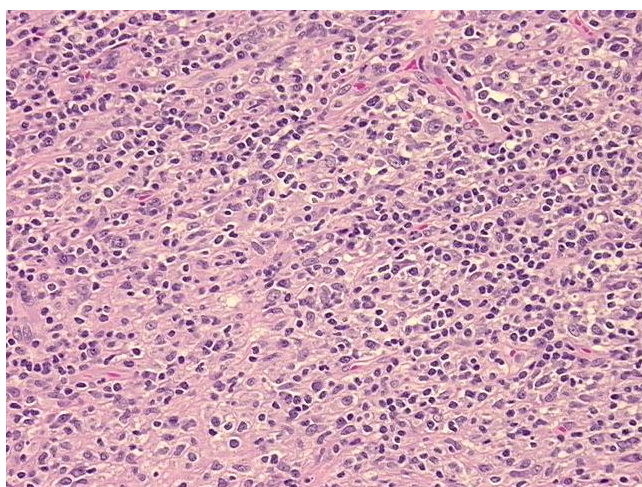


[View online »](#)

Minimum Stage Grouping:	I
T (Extent of Primary Tumor):	Not applicable
N (Lymph node metastasis):	Not applicable
M (Distant metastasis):	Not applicable
Diagnostic Test Results:	ALK1 ~ NPM-ALK fusion ~ p80 ! by IHC,Negative; CD3 polyclonal,Positive; CD45RO ~ A6 ~ UCHL1 ! by IHC,Positive; Vimentin ~ VIM ! by IHC,Positive; CD45 ~ Leukocyte common antigen ! by IHC,Positive; CD20 ~ B1 ~ Leu16 ! by IHC,Positive; CD79a
Storage:	Store FFPE tissue sections at +4°C.
Stability:	All FFPE tissue sections are stable for 1 year from date of purchase.

**Product images:**

4x Image



20x Image