

## Product datasheet for **CS813803**

### Tissue FFPE Sections, Kidney

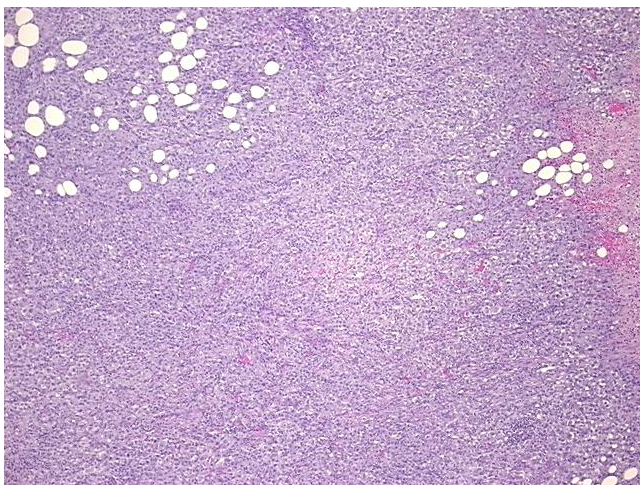
#### Product data:

|   |   |
|---|---|
| Product Type:                                     | FFPE Sections   |
| Disease State:                                    | Cancer  |
| Diagnosis Category:                               | Renal Cell Carcinoma  |
| Tissue:   | Kidney  |
| Frozen Sample ID:                                 | PA0000AE4A  |
| Case ID:  | CU0000016189  |
| Tissue of Origin:                                 | Kidney  |
| Site of Finding:                                  | Omentum   |
| Appearance:                                       | T   |
| Sample Diagnosis (from Pathology Verification):   | Carcinoma of kidney, renal cell, metastatic   |
| Normal:   | 1%  |
| Lesional:   | 0%  |
| Tumor:  | 70%   |
| Tumor Hypo/Acellular Stroma:                      | 0%  |
| Tumor Hypercellular Stroma:                       | 14%   |
| Necrosis:   | 15%   |
| Pathology Verification notes from H&E review:     | Inflammation: Moderate Mixed inflammatory infiltrate; Other Features/Comments: Tumor area: 13 mm x 4 mm |
| CASE Diagnosis (from medical center path report): | Carcinoma of kidney, renal cell, metastatic   |
| Age:  | 59  |
| Gender:   | Female  |
| Tumor Grade:                                      | Not Reported  |

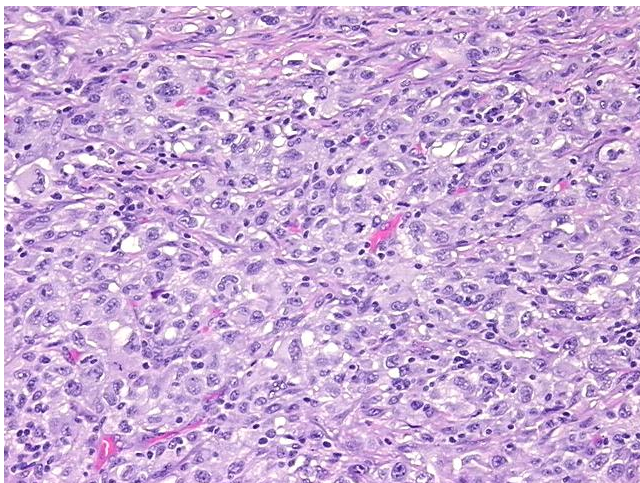


[View online »](#)

|                              |   |
|------------------------------|---|
| Minimum Stage Grouping:      | IV  |
| T (Extent of Primary Tumor): | TX  |
| N (Lymph node metastasis):   | NX  |
| M (Distant metastasis):      | M1  |
| Storage:                     | Store FFPE tissue sections at +4°C.                                   |
| Stability:                   | All FFPE tissue sections are stable for 1 year from date of purchase. |

**Product images:**

4x Image



20x Image