

Product datasheet for **CS813700**

Tissue FFPE Sections, Gastroesophageal junction

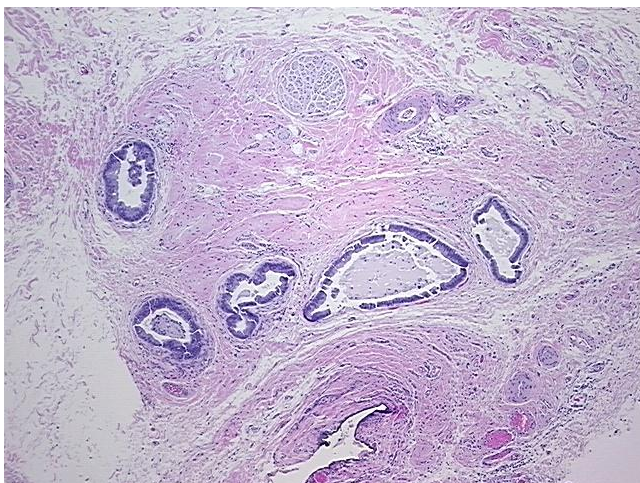
Product data:

Product Type:	FFPE Sections
Disease State:	Cancer
Diagnosis Category:	Esophageal/Gastroesophageal Cancer
Tissue:	Gastroesophageal junction
Frozen Sample ID:	PA0000A693
Case ID:	CU0000016132
Tissue of Origin:	Gastroesophageal junction
Site of Finding:	Stomach
Appearance:	T
Sample Diagnosis (from Pathology Verification):	Adenocarcinoma of gastroesophageal junction
Normal:	95%
Lesional:	0%
Tumor:	5%
Tumor Hypo/Acellular Stroma:	0%
Tumor Hypercellular Stroma:	0%
Necrosis:	0%
Pathology Verification notes from H&E review:	Non Tumor Structures: 15% Mucosa, 25% Submucosa, 55% Muscle, 5% Serosa; Other Features/Comments: Tumor in serosa, as direct extension
CASE Diagnosis (from medical center path report):	Adenocarcinoma of gastroesophageal junction
Age:	42
Gender:	Male
Tumor Grade:	AJCC G2: Moderately differentiated

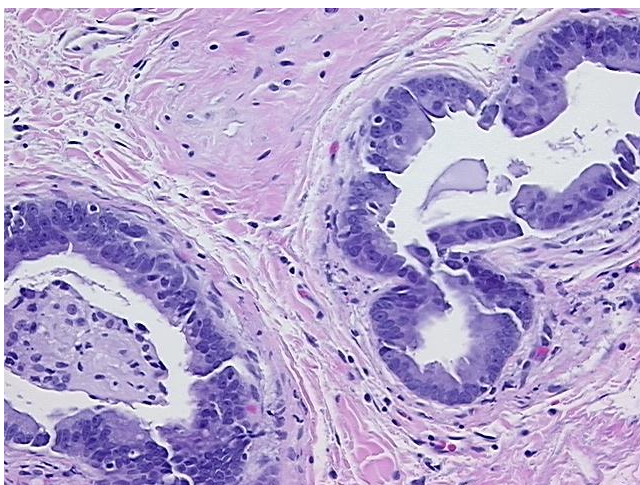


[View online »](#)

Minimum Stage Grouping:	II
T (Extent of Primary Tumor):	T1b2
N (Lymph node metastasis):	N1
M (Distant metastasis):	MX
Storage:	Store FFPE tissue sections at +4°C.
Stability:	All FFPE tissue sections are stable for 1 year from date of purchase.

Product images:

4x Image



20x Image