

Product datasheet for CS813669

Tissue FFPE Sections, Breast

Product data:

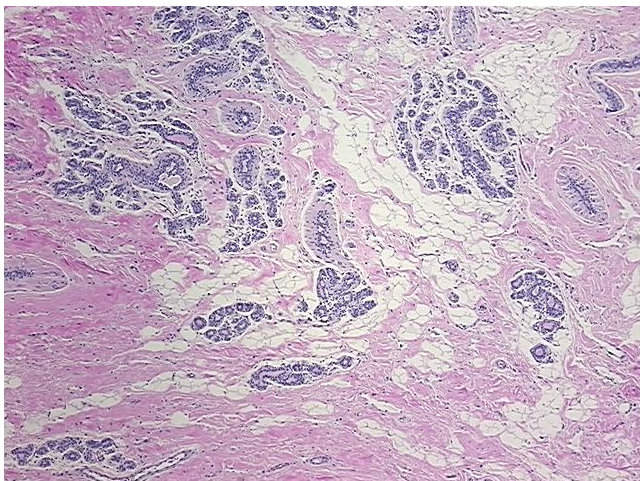
| | |
|---------------------------------------------------|--------------------------------------------------------------------------------|
| Product Type: | FFPE Sections |
| Disease State: | Normal |
| Diagnosis Category: | Normal |
| Tissue: | Breast |
| Frozen Sample ID: | PA154787EF |
| Case ID: | CU0000014869 |
| Tissue of Origin: | Breast |
| Site of Finding: | Breast |
| Appearance: | R |
| Sample Diagnosis (from Pathology Verification): | Within normal limits |
| Normal: | 100% |
| Lesional: | 0% |
| Tumor: | 0% |
| Tumor Hypo/Acellular Stroma: | 0% |
| Tumor Hypercellular Stroma: | 0% |
| Necrosis: | 0% |
| Pathology Verification notes from H&E review: | Non Tumor Structures: 40% Glandular epithelium, 30% Stroma, 30% Adipose tissue |
| CASE Diagnosis (from medical center path report): | Fibrocystic changes to breast |
| Age: | 33 |
| Gender: | Female |
| Storage: | Store FFPE tissue sections at +4°C. |



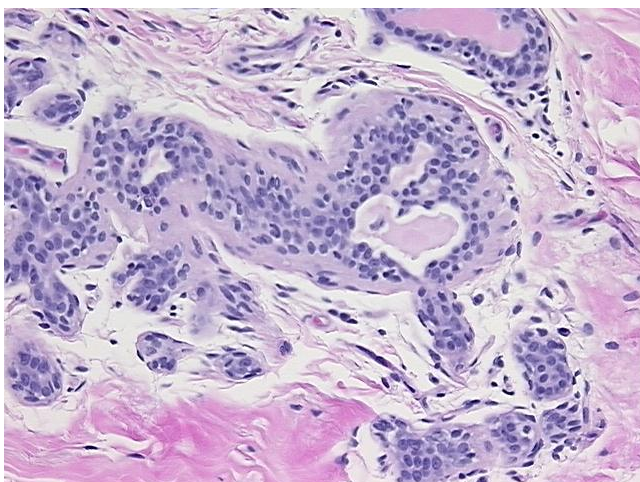
[View online »](#)

Stability: All FFPE tissue sections are stable for 1 year from date of purchase.

Product images:



4x Image



20x Image