

Product datasheet for **CS813605**

Tissue FFPE Sections, Breast

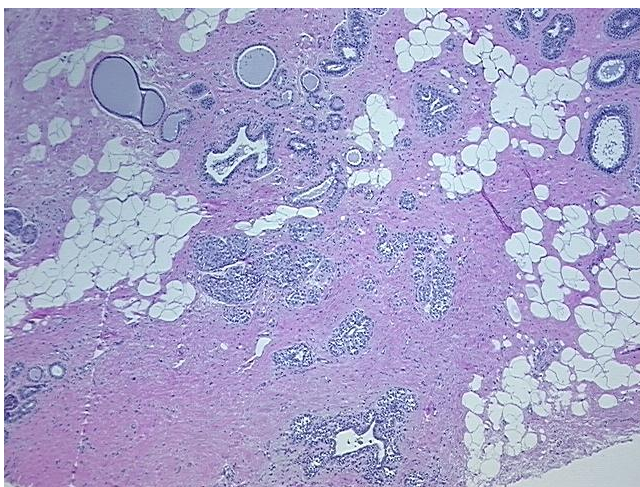
Product data:

Product Type:	FFPE Sections
Disease State:	Other Disease
Diagnosis Category:	Hyperplasia
Tissue:	Breast
Frozen Sample ID:	PA0F3367BB
Case ID:	CU0000014845
Tissue of Origin:	Breast
Site of Finding:	Breast
Appearance:	L
Sample Diagnosis (from Pathology Verification):	Ductal hyperplasia of breast, atypical
Normal:	0%
Lesional:	100%
Tumor:	0%
Tumor Hypo/Acellular Stroma:	0%
Tumor Hypercellular Stroma:	0%
Necrosis:	0%
Pathology Verification notes from H&E review:	Lesion (100%): Fibrocystic changes of breast, atypical 90%, Ductal hyperplasia of breast, atypical 10%; Non Tumor Structures: 20% Glandular epithelium, 55% Stroma, 25% Adipose tissue; Other Features/Comments: Atypical epithelial hyperplasia
CASE Diagnosis (from medical center path report):	Adenocarcinoma of breast, ductal
Age:	48
Gender:	Female

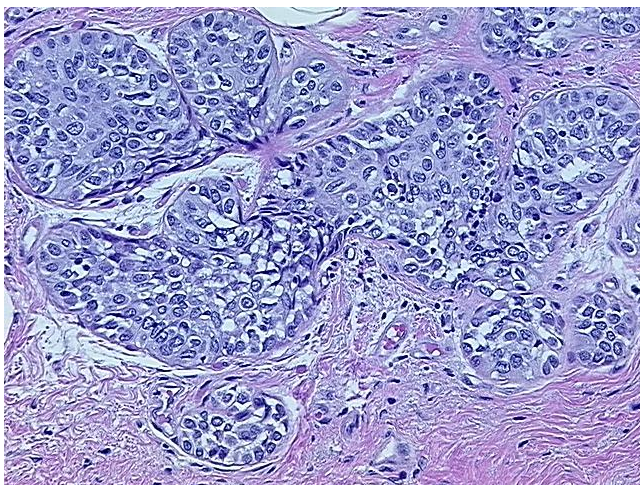


[View online »](#)

Tumor Grade:	Nottingham G2: 6-7 points Intermediate combined grade (moderately favorable)
Minimum Stage Grouping:	IIB
T (Extent of Primary Tumor):	T2
N (Lymph node metastasis):	N1a
M (Distant metastasis):	MX
Storage:	Store FFPE tissue sections at +4°C.
Stability:	All FFPE tissue sections are stable for 1 year from date of purchase.

Product images:

4x Image



20x Image