

Product datasheet for **CS813440**

Tissue FFPE Sections, Tendon

Product data:

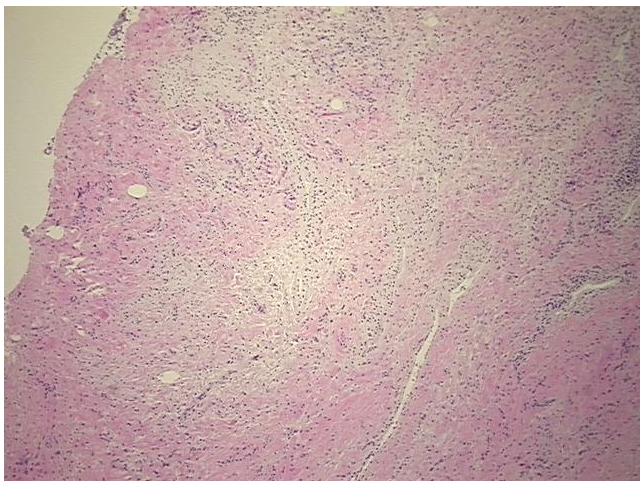
| | |
|---|--|
| Product Type: | FFPE Sections |
| Disease State: | Other Disease |
| Diagnosis Category: | Tendinitis |
| Tissue: | Tendon |
| Frozen Sample ID: | PA0000A478 |
| Case ID: | CU0000014776 |
| Tissue of Origin: | Tendon |
| Site of Finding: | Tendon |
| Appearance: | L |
| Sample Diagnosis (from Pathology Verification): | Tendinitis |
| Normal: | 0% |
| Lesional: | 100% |
| Tumor: | 0% |
| Tumor Hypo/Acellular Stroma: | 0% |
| Tumor Hypercellular Stroma: | 0% |
| Necrosis: | 0% |
| Pathology Verification notes from H&E review: | Inflammation: Moderate Mixed inflammatory infiltrate; Other Features/Comments: focal |
| CASE Diagnosis (from medical center path report): | Atherosclerosis |
| Age: | 58 |
| Gender: | Male |
| Storage: | Store FFPE tissue sections at +4°C. |



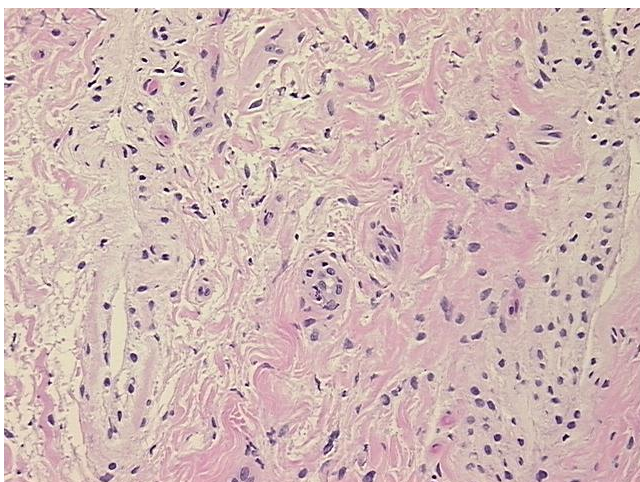
[View online »](#)

Stability: All FFPE tissue sections are stable for 1 year from date of purchase.

Product images:



4x Image



20x Image