

Product datasheet for **CS813393**

Tissue FFPE Sections, Lung: right middle lobe

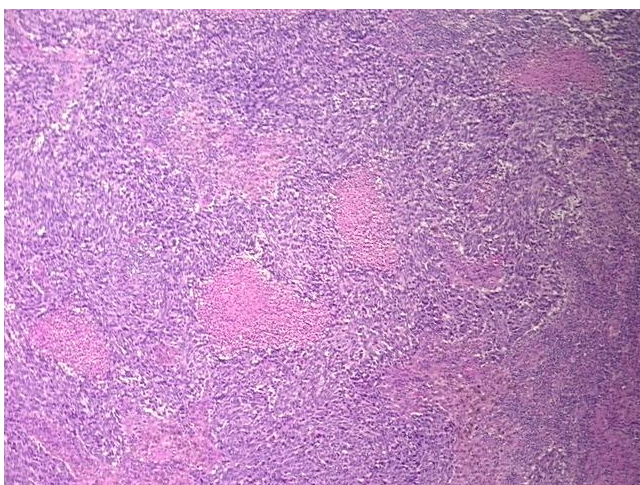
Product data:

Product Type:	FFPE Sections
Disease State:	Cancer
Diagnosis Category:	Lung Cancer
Tissue:	Lung
Frozen Sample ID:	PA10FD10BB
Case ID:	CU0000014767
Tissue of Origin:	Lung: right middle lobe
Site of Finding:	Lymph node
Appearance:	T
Sample Diagnosis (from Pathology Verification):	Carcinoma of lung, small cell, metastatic
Normal:	35%
Lesional:	0%
Tumor:	60%
Tumor Hypo/Acellular Stroma:	0%
Tumor Hypercellular Stroma:	0%
Necrosis:	5%
Pathology Verification notes from H&E review:	Non Tumor Structures: 40% Adherent lung tissue, 60% Lymphoid nodules
CASE Diagnosis (from medical center path report):	Carcinoma of lung, small cell
Age:	63
Gender:	Male
Tumor Grade:	AJCC G3: Poorly differentiated

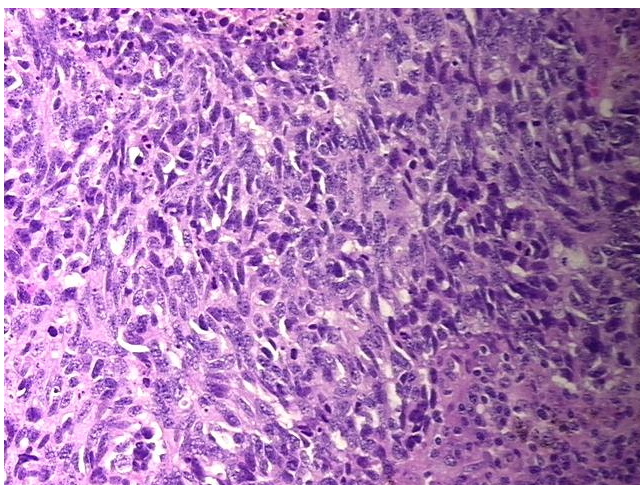


[View online »](#)

Minimum Stage Grouping:	IIA
T (Extent of Primary Tumor):	T1
N (Lymph node metastasis):	N1
M (Distant metastasis):	MX
Diagnostic Test Results:	Neuron specific enolase ~ NSE ! by IHC,Positive; Synaptophysin ~ SYN ! by IHC,Positive, focal; Chromogranin A ~ Parathyroid secretory protein 1 ! by IHC,Positive, focal; Cytokeratin AE1/AE3 ~ AE1/AE3 ! by IHC,Positive; Thyroid transcription factor
Storage:	Store FFPE tissue sections at +4°C.
Stability:	All FFPE tissue sections are stable for 1 year from date of purchase.

Product images:

4x Image



20x Image