

Product datasheet for **CS813382**

Tissue FFPE Sections, Skin

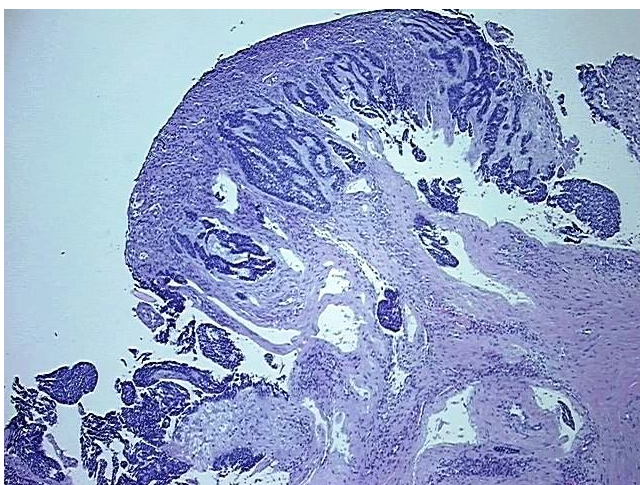
Product data:

Product Type:	FFPE Sections
Disease State:	Cancer
Diagnosis Category:	Skin Cancer
Tissue:	Skin
Frozen Sample ID:	PA0000938F
Case ID:	CU0000014762
Tissue of Origin:	Skin
Site of Finding:	Skin
Appearance:	Tumor
Sample Diagnosis (from Pathology Verification):	Carcinoma of skin, basal cell, nodular
Normal:	0%
Lesional:	0%
Tumor:	40%
Tumor Hypo/Acellular Stroma:	0%
Tumor Hypercellular Stroma:	55%
Necrosis:	5%
Pathology Verification notes from H&E review:	Tumor Stroma (Cellular): Desmoplastic reaction, Fibroblastic cells; Other Features/Comments: Tumor area: 5 mm x 2 mm
CASE Diagnosis (from medical center path report):	Carcinoma of skin, basal cell, nodular
Age:	68
Gender:	Male
Tumor Grade:	Not Reported

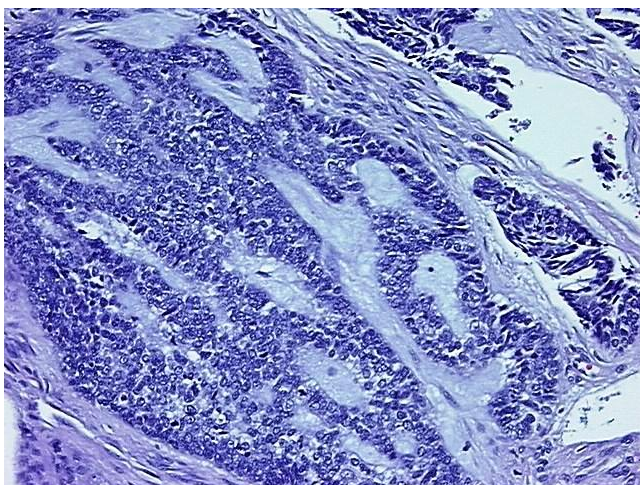


[View online »](#)

Minimum Stage Grouping:	II
T (Extent of Primary Tumor):	pT3
N (Lymph node metastasis):	pNX
M (Distant metastasis):	pMX
Storage:	Store FFPE tissue sections at +4°C.
Stability:	All FFPE tissue sections are stable for 1 year from date of purchase.

Product images:

4x Image



20x Image