

Product datasheet for **CS813307**

Tissue FFPE Sections, Brain

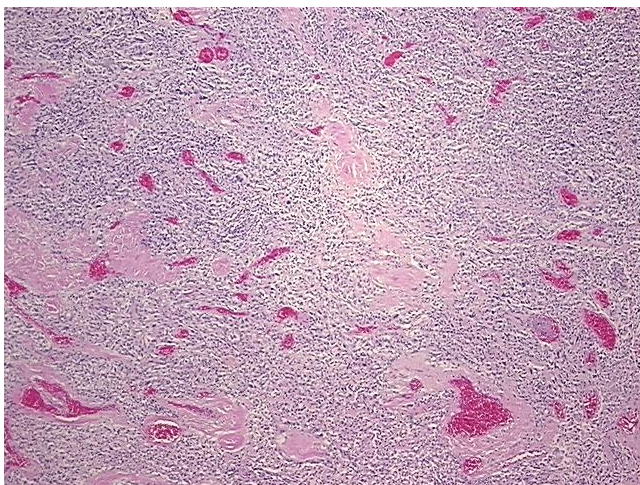
Product data:

Product Type:	FFPE Sections
Disease State:	Other Disease
Diagnosis Category:	Meningioma
Tissue:	Brain
Frozen Sample ID:	PA15478853
Case ID:	CU0000014744
Tissue of Origin:	Brain
Site of Finding:	Brain
Appearance:	T
Sample Diagnosis (from Pathology Verification):	Meningioma, atypical, recurrent
Normal:	0%
Lesional:	0%
Tumor:	90%
Tumor Hypo/Acellular Stroma:	5%
Tumor Hypercellular Stroma:	5%
Necrosis:	0%
Pathology Verification notes from H&E review:	Tumor Stroma (Hypo/Acellular): Hyalinization
CASE Diagnosis (from medical center path report):	Meningioma, atypical, recurrent
Age:	48
Gender:	Male
Tumor Grade:	WHO Grade II

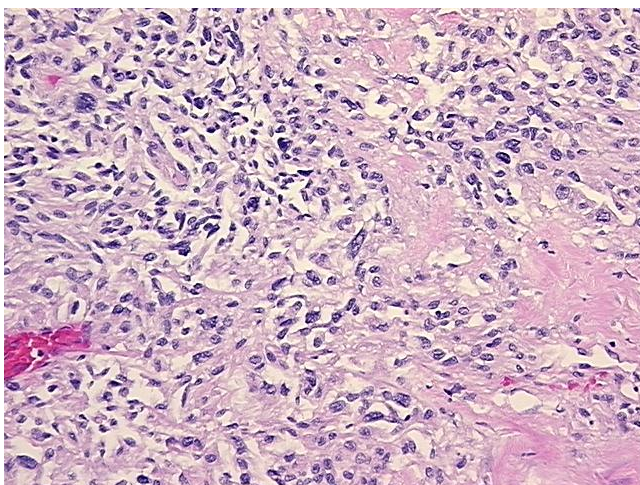


[View online »](#)

Minimum Stage Grouping:	Not Reported
T (Extent of Primary Tumor):	Not Reported
N (Lymph node metastasis):	Not Reported
M (Distant metastasis):	Not Reported
Storage:	Store FFPE tissue sections at +4°C.
Stability:	All FFPE tissue sections are stable for 1 year from date of purchase.

Product images:

4x Image



20x Image