

## Product datasheet for CS813291

### Tissue FFPE Sections, Lung

#### Product data:

|   |   |
|---|---|
| Product Type:                                     | FFPE Sections                                 |
| Disease State:                                    | Cancer  |
| Diagnosis Category:                               | Lung Cancer                                   |
| Tissue:   | Lung  |
| Frozen Sample ID:                                 | PA154785D7                                    |
| Case ID:  | CU0000014738                                  |
| Tissue of Origin:                                 | Lung  |
| Site of Finding:                                  | Lymph node                                    |
| Appearance:                                       | T   |
| Sample Diagnosis (from Pathology Verification):   | Carcinoma of lung, non-small cell, metastatic |
| Normal:   | 5%  |
| Lesional:   | 0%  |
| Tumor:  | 45%   |
| Tumor Hypo/Acellular Stroma:                      | 0%  |
| Tumor Hypercellular Stroma:                       | 5%  |
| Necrosis:   | 45%   |
| CASE Diagnosis (from medical center path report): | Carcinoma of lung, non-small cell, metastatic |
| Age:  | 78  |
| Gender:   | Female  |
| Tumor Grade:                                      | AJCC G3: Poorly differentiated                |
| Minimum Stage Grouping:                           | IIIA  |



[View online »](#)

T (Extent of Primary Tumor): TX

N (Lymph node metastasis): N2

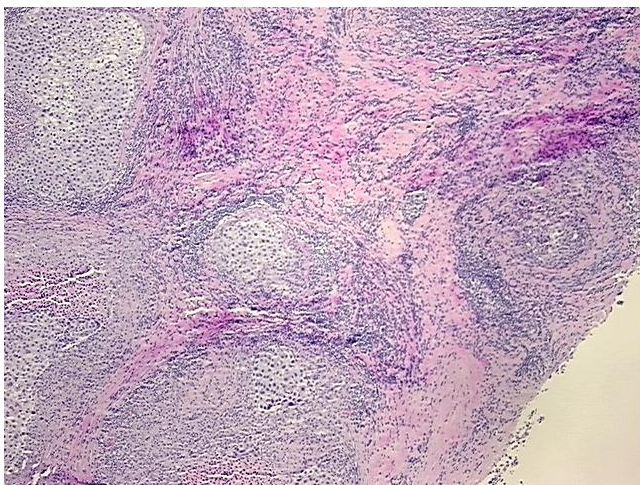
M (Distant metastasis): MX

Diagnostic Test Results: Cytokeratin 7 ~ CK7 ! by IHC,Negative; Cytokeratin 20 ~ CK20 ! by IHC,Negative; Thyroid transcription factor 1 ~ TTF1 ! by IHC,Negative

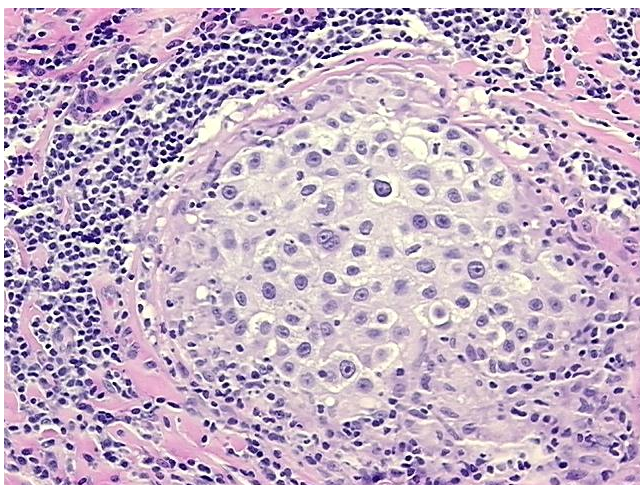
Storage: Store FFPE tissue sections at +4°C.

Stability: All FFPE tissue sections are stable for 1 year from date of purchase.

### Product images:



4x Image



20x Image