

Product datasheet for CS813290

Tissue FFPE Sections, Lung

Product data:

Product Type:	FFPE Sections
Disease State:	Cancer
Diagnosis Category:	Lung Cancer
Tissue:	Lung
Frozen Sample ID:	PA154785D6
Case ID:	CU0000014738
Tissue of Origin:	Lung
Site of Finding:	Lymph node
Appearance:	T
Sample Diagnosis (from Pathology Verification):	Carcinoma of lung, non-small cell, metastatic
Normal:	5%
Lesional:	0%
Tumor:	45%
Tumor Hypo/Acellular Stroma:	0%
Tumor Hypercellular Stroma:	5%
Necrosis:	45%
CASE Diagnosis (from medical center path report):	Carcinoma of lung, non-small cell, metastatic
Age:	78
Gender:	Female
Tumor Grade:	AJCC G3: Poorly differentiated
Minimum Stage Grouping:	IIIA



[View online »](#)

T (Extent of Primary Tumor): TX

N (Lymph node metastasis): N2

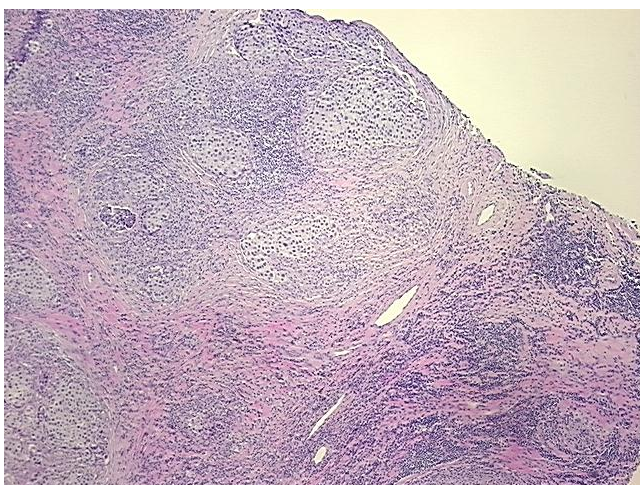
M (Distant metastasis): MX

Diagnostic Test Results: Cytokeratin 7 ~ CK7 ! by IHC,Negative; Cytokeratin 20 ~ CK20 ! by IHC,Negative; Thyroid transcription factor 1 ~ TTF1 ! by IHC,Negative

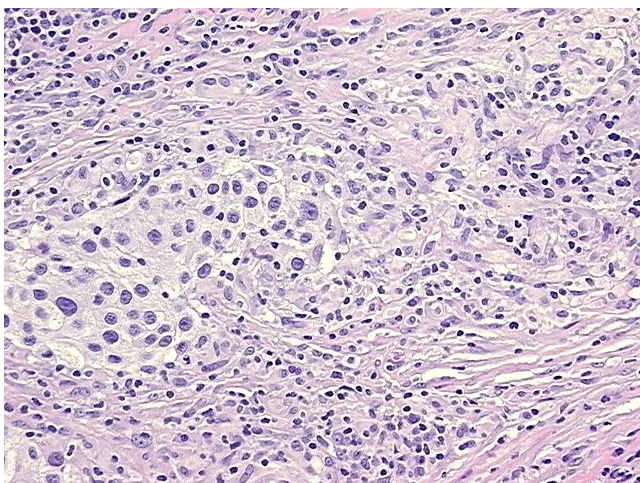
Storage: Store FFPE tissue sections at +4°C.

Stability: All FFPE tissue sections are stable for 1 year from date of purchase.

Product images:



4x Image



20x Image