

## Product datasheet for **CS813287**

### Tissue FFPE Sections, Lung

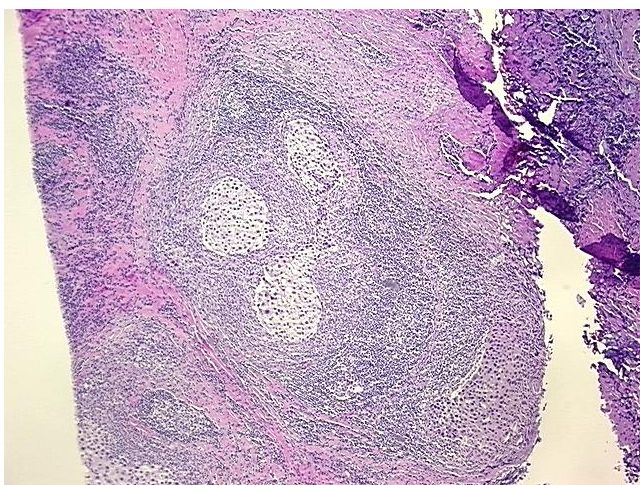
#### Product data:

Product Type:	FFPE Sections
Disease State:	Cancer
Diagnosis Category:	Lung Cancer
Tissue:	Lung
Frozen Sample ID:	PA154785D4
Case ID:	CU0000014738
Tissue of Origin:	Lung
Site of Finding:	Lymph node
Appearance:	T
Sample Diagnosis (from Pathology Verification):	Carcinoma of lung, non-small cell, metastatic
Normal:	5%
Lesional:	0%
Tumor:	45%
Tumor Hypo/Acellular Stroma:	0%
Tumor Hypercellular Stroma:	5%
Necrosis:	45%
CASE Diagnosis (from medical center path report):	Carcinoma of lung, non-small cell, metastatic
Age:	78
Gender:	Female
Tumor Grade:	AJCC G3: Poorly differentiated
Minimum Stage Grouping:	IIIA

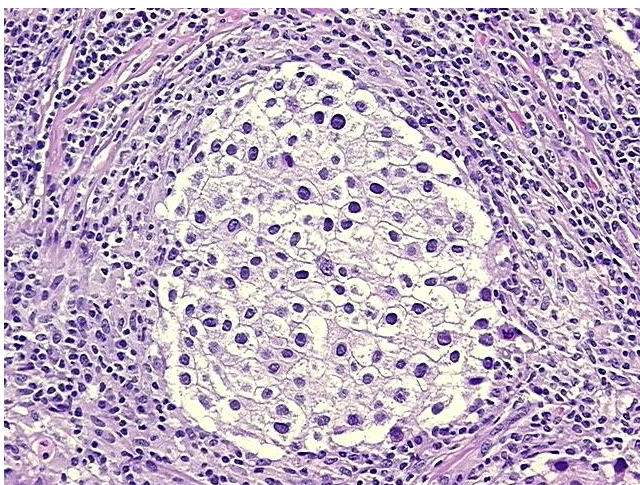


[View online »](#)

T (Extent of Primary Tumor):	TX
N (Lymph node metastasis):	N2
M (Distant metastasis):	MX
Diagnostic Test Results:	Cytokeratin 7 ~ CK7 ! by IHC,Negative; Cytokeratin 20 ~ CK20 ! by IHC,Negative; Thyroid transcription factor 1 ~ TTF1 ! by IHC,Negative
Storage:	Store FFPE tissue sections at +4°C.
Stability:	All FFPE tissue sections are stable for 1 year from date of purchase.

**Product images:**

4x Image



20x Image