

Product datasheet for CS813275

Tissue FFPE Sections, Lung

Product data:

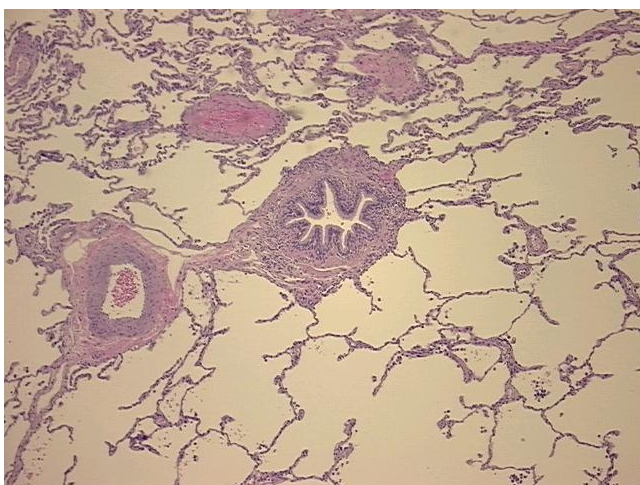
Product Type:	FFPE Sections
Disease State:	Other Disease
Diagnosis Category:	Pneumonia
Tissue:	Lung
Frozen Sample ID:	PA00009ACF
Case ID:	CU0000014734
Tissue of Origin:	Lung
Site of Finding:	Lung
Appearance:	L
Sample Diagnosis (from Pathology Verification):	Pneumonia, organizing
Normal:	80%
Lesional:	20%
Tumor:	0%
Tumor Hypo/Acellular Stroma:	0%
Tumor Hypercellular Stroma:	0%
Necrosis:	0%
Pathology Verification notes from H&E review:	Non Tumor Structures: 35% Alveoli, 15% Bronchioles, 50% Fibrovascular septa
CASE Diagnosis (from medical center path report):	Tumor of lung, carcinoid, atypical
Age:	53
Gender:	Female
Tumor Grade:	Not Reported



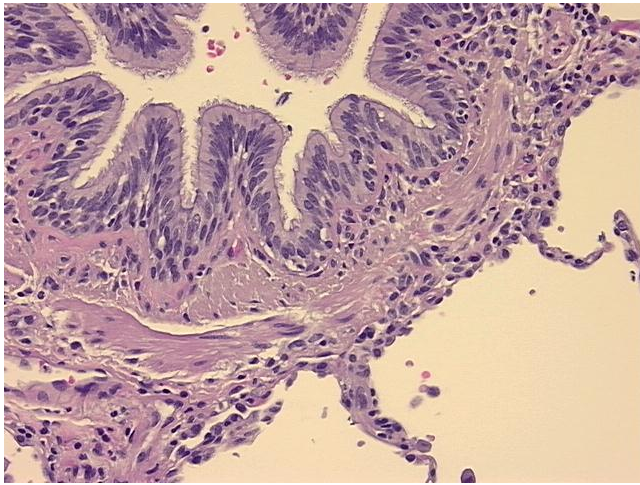
[View online »](#)

Minimum Stage Grouping:	Not Reported
T (Extent of Primary Tumor):	Not Reported
N (Lymph node metastasis):	Not Reported
M (Distant metastasis):	Not Reported
Diagnostic Test Results:	Congo red,Negative; GMS ~ Grocott methenamine silver stain,Negative; Acid-fast bacteria ~ AFB ~ Ziehl-Neelsen acid fast,Negative; Neuron specific enolase ~ NSE ! by IHC,Positive, strong; Synaptophysin ~ SYN ! by IHC,Reported as Performed or Revi
Storage:	Store FFPE tissue sections at +4°C.
Stability:	All FFPE tissue sections are stable for 1 year from date of purchase.

Product images:



4x Image



20x Image