

Product datasheet for CS813261

Tissue FFPE Sections, Lymphoid tissue

Product data:

Product Type:	FFPE Sections
Disease State:	Cancer
Diagnosis Category:	Lymphoma
Tissue:	Lymphoid tissue
Frozen Sample ID:	PA154785B8
Case ID:	CU0000014732
Tissue of Origin:	Lymphoid tissue
Site of Finding:	Adnexa: left
Appearance:	T
Sample Diagnosis (from Pathology Verification):	Lymphoma, large B-cell, diffuse
Normal:	0%
Lesional:	0%
Tumor:	10%
Tumor Hypo/Acellular Stroma:	0%
Tumor Hypercellular Stroma:	5%
Necrosis:	85%
CASE Diagnosis (from medical center path report):	Lymphoma, large B-cell, diffuse
Age:	38
Gender:	Female
Tumor Grade:	Other Histologic Grade
Minimum Stage Grouping:	IIE



[View online »](#)

T (Extent of Primary Tumor): Not applicable

N (Lymph node metastasis): Not applicable

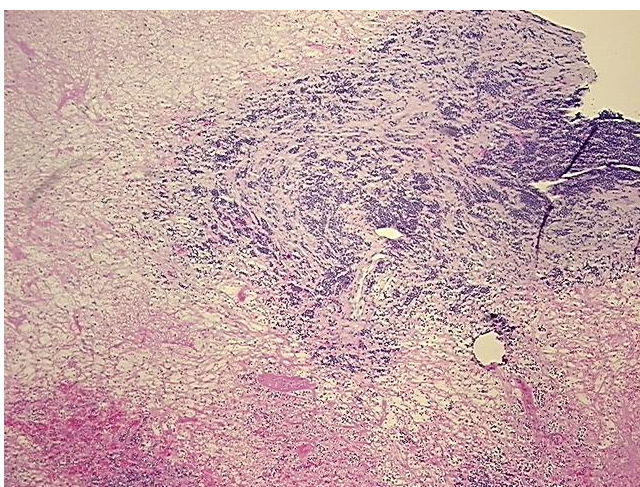
M (Distant metastasis): Not applicable

Diagnostic Test Results: CD227 ~ MUC1 ~ EMA ~ CA15-3 ! by IHC,Negative; CD3 ~ Leu4 ~ UCHT1 ! by IHC,Negative; FMC7 antigen ! by IHC,Negative; CD45RO ~ A6 ~ UCHL1 ! by IHC,Negative; Neuron specific enolase ~ NSE ! by IHC,Negative; S100 protein,Negative; Progesteron

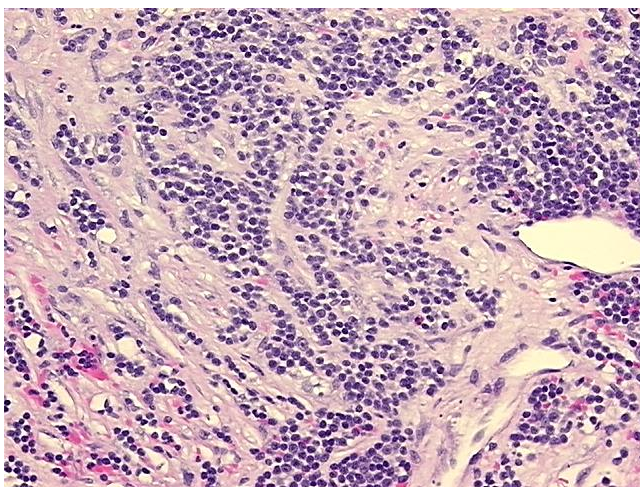
Storage: Store FFPE tissue sections at +4°C.

Stability: All FFPE tissue sections are stable for 1 year from date of purchase.

Product images:



4x Image



20x Image