

Product datasheet for CS812945

Tissue FFPE Sections, Kidney

Product data:

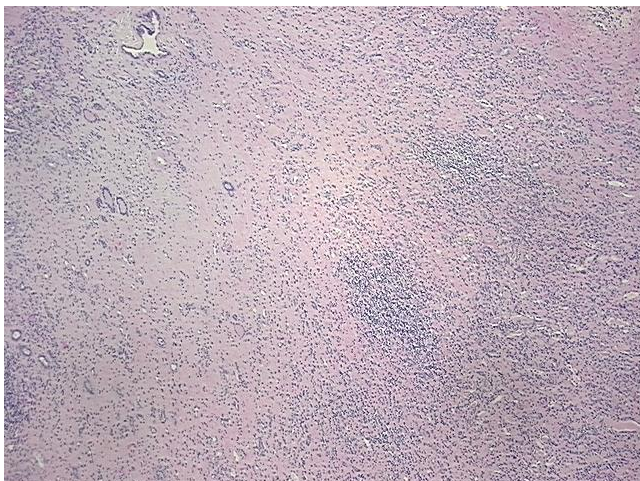
| | |
|---------------------------------------------------|--------------------------------------------------------------------------------------------------------------------------|
| Product Type: | FFPE Sections |
| Disease State: | Other Disease |
| Diagnosis Category: | Nephritis |
| Tissue: | Kidney |
| Frozen Sample ID: | PA00009DA4 |
| Case ID: | CU0000014664 |
| Tissue of Origin: | Kidney |
| Site of Finding: | Kidney |
| Appearance: | L |
| Sample Diagnosis (from Pathology Verification): | Pyelonephritis, chronic |
| Normal: | 20% |
| Lesional: | 80% |
| Tumor: | 0% |
| Tumor Hypo/Acellular Stroma: | 0% |
| Tumor Hypercellular Stroma: | 0% |
| Necrosis: | 0% |
| Pathology Verification notes from H&E review: | Inflammation: Severe Lymphoplasmacytic infiltrate; Other Features/Comments: No normal architecture in lesional component |
| CASE Diagnosis (from medical center path report): | Pyelonephritis, chronic |
| Age: | 38 |
| Gender: | Female |
| Storage: | Store FFPE tissue sections at +4°C. |



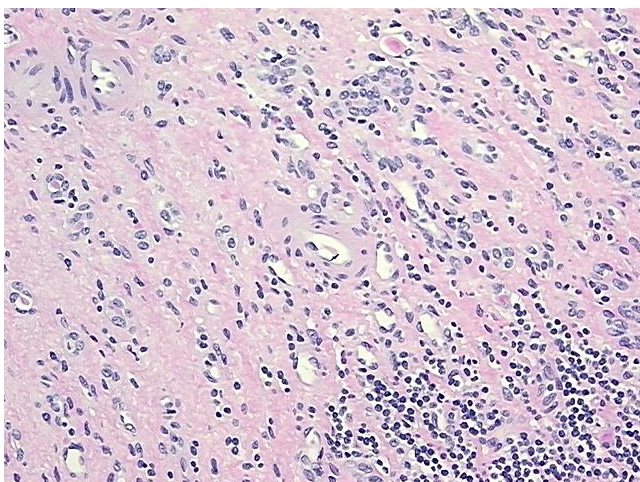
[View online »](#)

Stability: All FFPE tissue sections are stable for 1 year from date of purchase.

Product images:



4x Image



20x Image