

Product datasheet for **CS812876**

Tissue FFPE Sections, Lung

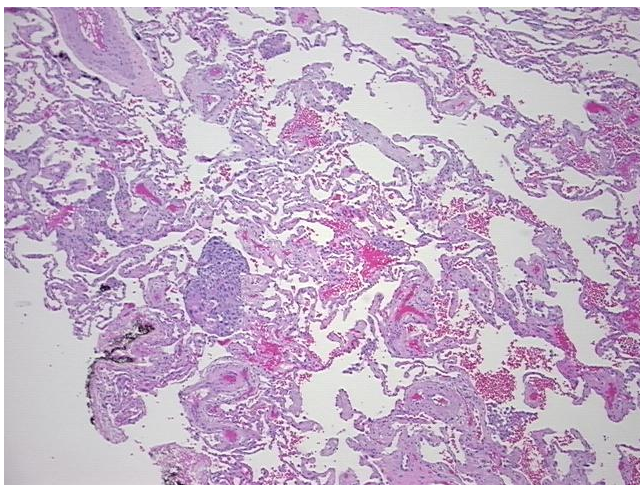
Product data:

| | |
|---|--|
| Product Type: | FFPE Sections |
| Disease State: | Cancer |
| Diagnosis Category: | Lung Cancer |
| Tissue: | Lung |
| Frozen Sample ID: | PA1547835E |
| Case ID: | CU0000014642 |
| Tissue of Origin: | Lung |
| Site of Finding: | Lung |
| Appearance: | T |
| Sample Diagnosis (from Pathology Verification): | Carcinoma of lung, squamous cell |
| Normal: | 95% |
| Lesional: | 0% |
| Tumor: | 5% |
| Tumor Hypo/Acellular Stroma: | 0% |
| Tumor Hypercellular Stroma: | 0% |
| Necrosis: | 0% |
| Pathology Verification notes from H&E review: | Inflammation: Mild Lymphoid infiltrate; Non Tumor Structures: 83% Alveoli, 2% Bronchioles, 15% Fibrovascular septa |
| CASE Diagnosis (from medical center path report): | Carcinoma of lung, squamous cell |
| Age: | 72 |
| Gender: | Male |
| Tumor Grade: | AJCC G2: Moderately differentiated |

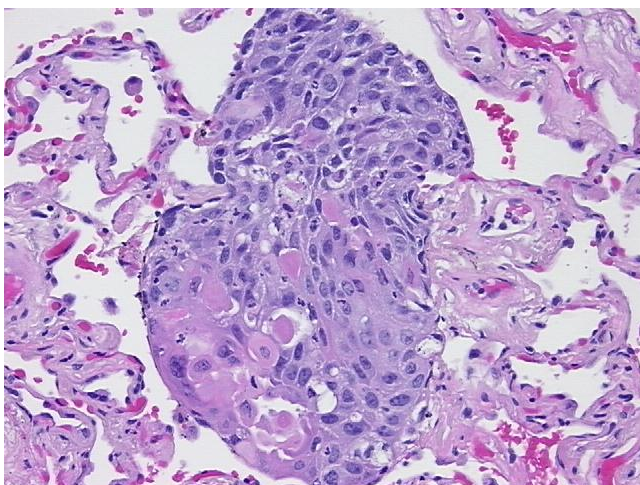


[View online »](#)

| | |
|------------------------------|---|
| Minimum Stage Grouping: | IIB |
| T (Extent of Primary Tumor): | T3 |
| N (Lymph node metastasis): | N0 |
| M (Distant metastasis): | MX |
| Storage: | Store FFPE tissue sections at +4°C. |
| Stability: | All FFPE tissue sections are stable for 1 year from date of purchase. |

Product images:

4x Image



20x Image