

## Product datasheet for **CS812827**

### Tissue FFPE Sections, Breast

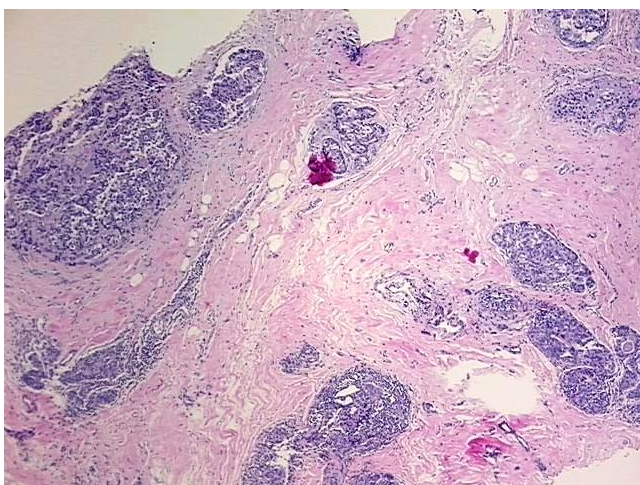
#### Product data:

Product Type:	FFPE Sections
Disease State:	Cancer
Diagnosis Category:	Breast Cancer
Tissue:	Breast
Frozen Sample ID:	PA00008B30
Case ID:	CU0000014625
Tissue of Origin:	Breast
Site of Finding:	Breast
Appearance:	Tumor
Sample Diagnosis (from Pathology Verification):	Adenocarcinoma of breast, ductal
Normal:	0%
Lesional:	0%
Tumor:	30%
Tumor Hypo/Acellular Stroma:	0%
Tumor Hypercellular Stroma:	70%
Necrosis:	0%
Pathology Verification notes from H&E review:	Tumor Stroma (Cellular): Fibroblastic cells, Inflammatory cells; Other Features/Comments: ductal carcinoma in situ present
CASE Diagnosis (from medical center path report):	Adenocarcinoma of breast, ductal
Age:	59
Gender:	Female
Tumor Grade:	Nottingham G2: 6-7 points Intermediate combined grade (moderately favorable)

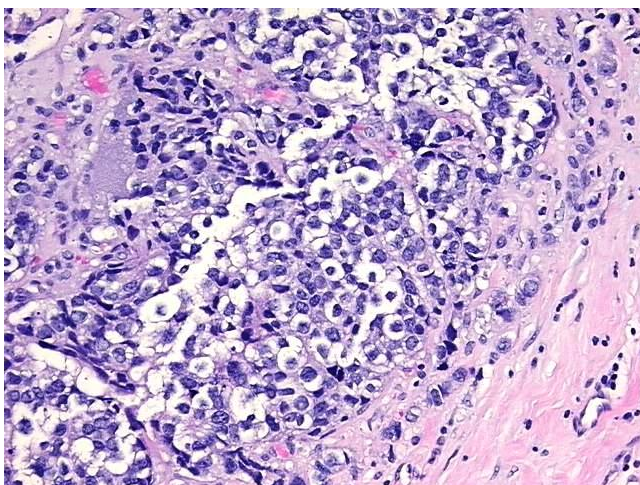


[View online »](#)

Minimum Stage Grouping:	IIIA
T (Extent of Primary Tumor):	pT1b
N (Lymph node metastasis):	pN2a
M (Distant metastasis):	pMX
Storage:	Store FFPE tissue sections at +4°C.
Stability:	All FFPE tissue sections are stable for 1 year from date of purchase.

**Product images:**

4x Image



20x Image