

Product datasheet for **CS812594**

Tissue FFPE Sections, Spleen

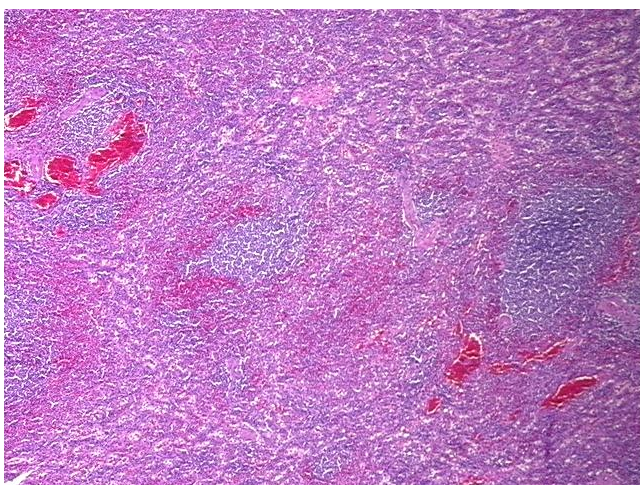
Product data:

Product Type:	FFPE Sections
Disease State:	Other Disease
Diagnosis Category:	Hyperplasia
Tissue:	Spleen
Frozen Sample ID:	PA10FD01FE
Case ID:	CU0000014154
Tissue of Origin:	Spleen
Site of Finding:	Spleen
Appearance:	L
Sample Diagnosis (from Pathology Verification):	Follicular hyperplasia of spleen
Normal:	0%
Lesional:	100%
Tumor:	0%
Tumor Hypo/Acellular Stroma:	0%
Tumor Hypercellular Stroma:	0%
Necrosis:	0%
Pathology Verification notes from H&E review:	Non Tumor Structures: 90% Red pulp, 10% White pulp
CASE Diagnosis (from medical center path report):	Angiosarcoma of spleen
Age:	59
Gender:	Female
Tumor Grade:	AJCC G3: Poorly differentiated

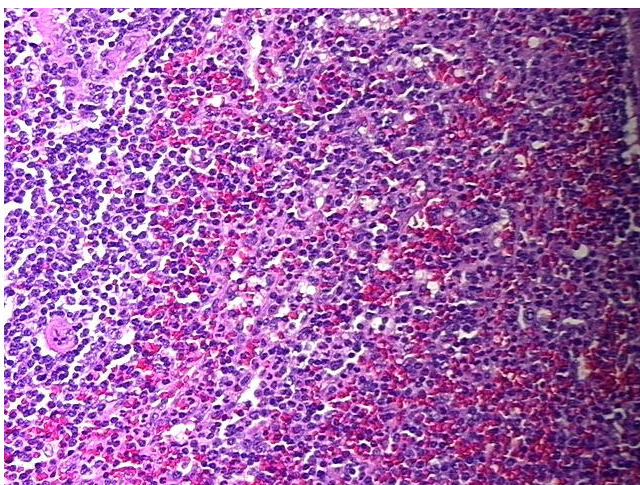


[View online »](#)

Minimum Stage Grouping:	IIB
T (Extent of Primary Tumor):	T2
N (Lymph node metastasis):	NX
M (Distant metastasis):	MX
Diagnostic Test Results:	Alpha-1-Antichymotrypsin ~ A-ACT,Positive, strong; Alpha-1-Antitrypsin ~ A-AT,Positive, strong; Lysozyme ~ Muramidase ! by IHC,Positive, focal; FLT1 ~ vascular endothelial growth factor receptor 1,Positive, weak; Factor VIII ! by IHC,Positive, weak
Storage:	Store FFPE tissue sections at +4°C.
Stability:	All FFPE tissue sections are stable for 1 year from date of purchase.

Product images:

4x Image



20x Image