

Product datasheet for **CS812583**

Tissue FFPE Sections, Multiple digestive system sites

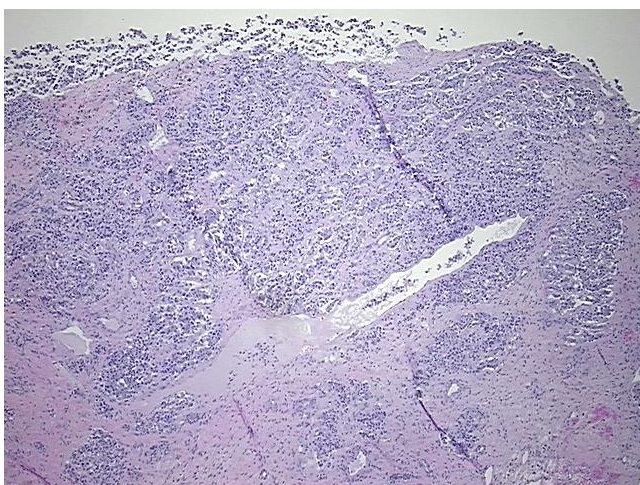
Product data:

| | |
|---|---|
| Product Type: | FFPE Sections |
| Disease State: | Cancer |
| Diagnosis Category: | Cancer of Unknown Origin |
| Tissue: | Unknown origin |
| Frozen Sample ID: | PA1547811C |
| Case ID: | CU0000014153 |
| Tissue of Origin: | Multiple digestive system sites |
| Site of Finding: | Liver |
| Appearance: | T |
| Sample Diagnosis (from Pathology Verification): | Carcinoma of unknown origin, neuroendocrine, metastatic |
| Normal: | 0% |
| Lesional: | 0% |
| Tumor: | 40% |
| Tumor Hypo/Acellular Stroma: | 60% |
| Tumor Hypercellular Stroma: | 0% |
| Necrosis: | 0% |
| Pathology Verification notes from H&E review: | Tumor Stroma (Hypo/Acellular): Desmoplastic reaction |
| CASE Diagnosis (from medical center path report): | Carcinoma of unknown origin, neuroendocrine, metastatic |
| Age: | 57 |
| Gender: | Male |
| Tumor Grade: | Not Reported |

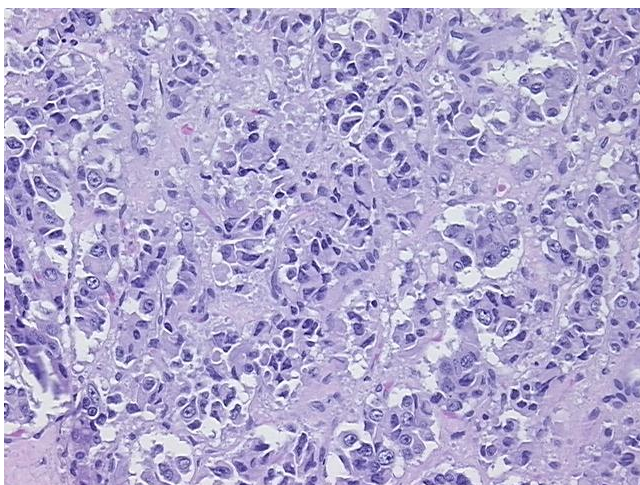


[View online »](#)

| | |
|------------------------------|--|
| Minimum Stage Grouping: | IV |
| T (Extent of Primary Tumor): | TX |
| N (Lymph node metastasis): | NX |
| M (Distant metastasis): | M1 |
| Diagnostic Test Results: | CEAp ~ CEA, polyclonal,Positive; Synaptophysin ~ SYN ! by IHC,Positive; Cytokeratin 7 ~ CK7 ! by IHC,Positive; Alpha-1-fetoprotein ~ AFP ! by IHC,Negative; CD10 ~ CALLA ~ Common ALL antigen ! by IHC,Negative; Cytokeratin AE1/AE3 ~ AE1/AE3 ! |
| Storage: | Store FFPE tissue sections at +4°C. |
| Stability: | All FFPE tissue sections are stable for 1 year from date of purchase. |

Product images:

4x Image



20x Image