

## Product datasheet for CS812542

### Tissue FFPE Sections, Smooth muscle

#### Product data:

Product Type:	FFPE Sections
Disease State:	Cancer
Diagnosis Category:	Sarcoma
Tissue:	Muscle
Frozen Sample ID:	PA15478591
Case ID:	CU0000014127
Tissue of Origin:	Smooth muscle
Site of Finding:	Thigh
Appearance:	T
Sample Diagnosis (from Pathology Verification):	Leiomyosarcoma
Normal:	0%
Lesional:	0%
Tumor:	98%
Tumor Hypo/Acellular Stroma:	2%
Tumor Hypercellular Stroma:	0%
Necrosis:	0%
Pathology Verification notes from H&E review:	Tumor Stroma (Hypo/Acellular): Fibrosis; Inflammation: Moderate Mixed inflammatory infiltrate; Other Features/Comments: Sarcoma with myoid features
CASE Diagnosis (from medical center path report):	Leiomyosarcoma
Age:	35
Gender:	Male
Tumor Grade:	AJCC G3: Poorly differentiated

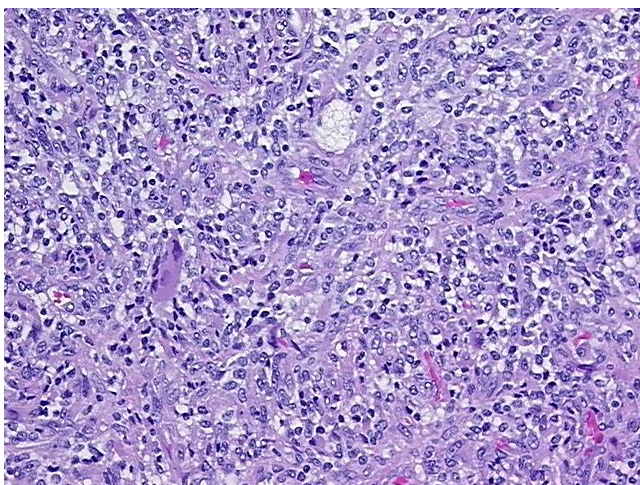


[View online »](#)

Minimum Stage Grouping:	III
T (Extent of Primary Tumor):	T2b
N (Lymph node metastasis):	NX
M (Distant metastasis):	MX
Diagnostic Test Results:	CD227 ~ MUC1 ~ EMA ~ CA15-3 ! by IHC,Negative; Caldesmon (h),Negative; Calponin,Negative; Cytokeratin (Pan) ~ Keratin, Pan ! by IHC,Negative; Myogenin ~ Myf4 ! by IHC,Negative; Smooth muscle actin ~ SMA ~ Alpha-SMA ! by IHC,Negative; Vimentin
Storage:	Store FFPE tissue sections at +4°C.
Stability:	All FFPE tissue sections are stable for 1 year from date of purchase.

**Product images:**

4x Image



20x Image