

Product datasheet for **CS812506**

Tissue FFPE Sections, Colon: right

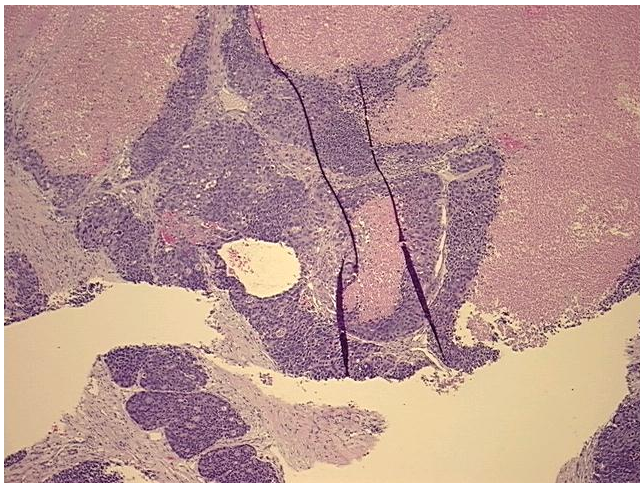
Product data:

Product Type:	FFPE Sections
Disease State:	Cancer
Diagnosis Category:	Colorectal Cancer
Tissue:	Colon
Frozen Sample ID:	PA11B41CD9
Case ID:	CU0000014105
Tissue of Origin:	Colon: right
Site of Finding:	Liver
Appearance:	T
Sample Diagnosis (from Pathology Verification):	Carcinoma of colon, neuroendocrine, metastatic
Normal:	0%
Lesional:	0%
Tumor:	30%
Tumor Hypo/Acellular Stroma:	0%
Tumor Hypercellular Stroma:	0%
Necrosis:	70%
Pathology Verification notes from H&E review:	Electron microscopy results do not support a neuroendocrine organ for this tumor. This may be due to sampling error.
CASE Diagnosis (from medical center path report):	Carcinoma of colon, neuroendocrine
Age:	63
Gender:	Female
Tumor Grade:	Not Reported

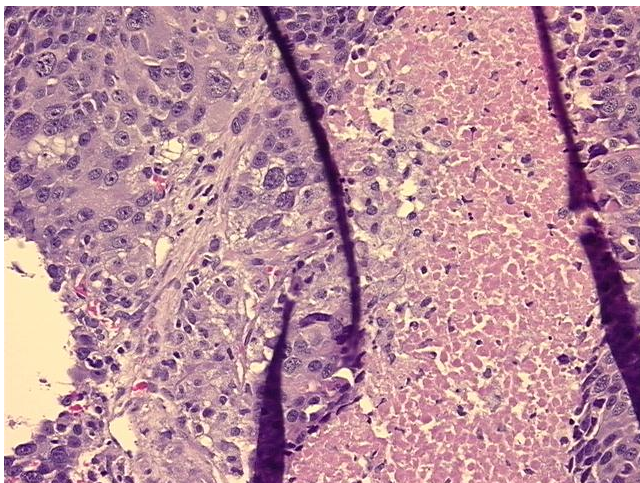


[View online »](#)

Minimum Stage Grouping:	IV
T (Extent of Primary Tumor):	T4
N (Lymph node metastasis):	N1
M (Distant metastasis):	M1
Storage:	Store FFPE tissue sections at +4°C.
Stability:	All FFPE tissue sections are stable for 1 year from date of purchase.

Product images:

4x Image



20x Image