

## Product datasheet for **CS812044**

### Tissue FFPE Sections, Breast

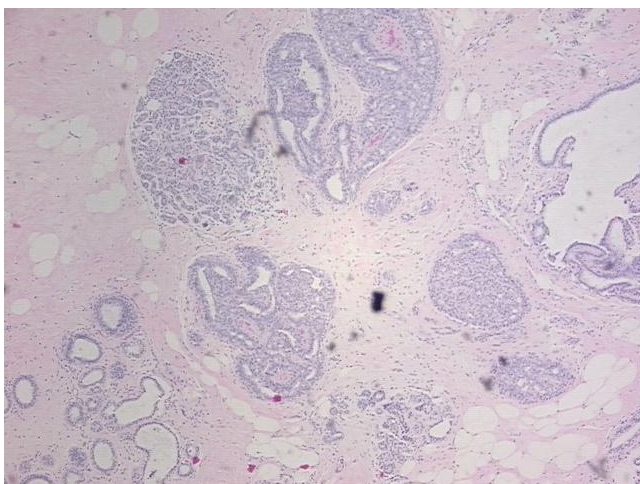
#### Product data:

Product Type:	FFPE Sections
Disease State:	Other Disease
Diagnosis Category:	Hyperplasia
Tissue:	Breast
Frozen Sample ID:	PA0F3359EB
Case ID:	CU0000012817
Tissue of Origin:	Breast
Site of Finding:	Breast
Appearance:	L
Sample Diagnosis (from Pathology Verification):	Ductal hyperplasia of breast
Normal:	85%
Lesional:	15%
Tumor:	0%
Tumor Hypo/Acellular Stroma:	0%
Tumor Hypercellular Stroma:	0%
Necrosis:	0%
Pathology Verification notes from H&E review:	Non Tumor Structures: 50% Glandular epithelium, 45% Stroma, 5% Adipose tissue
CASE Diagnosis (from medical center path report):	Adenocarcinoma of breast, ductal, mucinous
Age:	58
Gender:	Female
Tumor Grade:	Nottingham G1: 3-5 points Low combined grade (favorable)

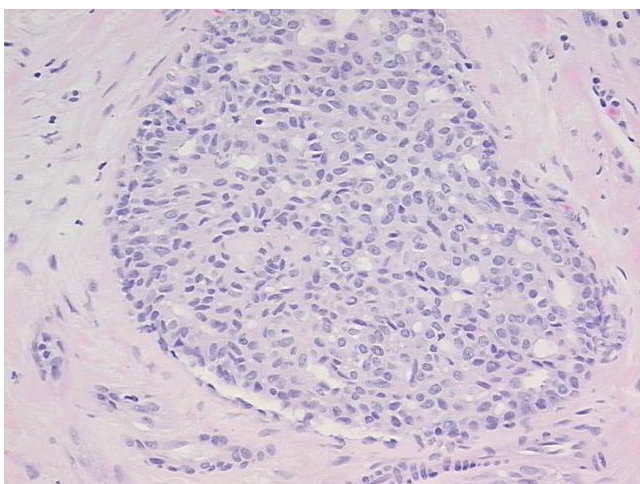


[View online »](#)

Minimum Stage Grouping:	I
T (Extent of Primary Tumor):	T1a
N (Lymph node metastasis):	N0
M (Distant metastasis):	MX
Diagnostic Test Results:	Progesterone receptor ~ PR ! by IHC,Positive; Estrogen receptor ~ ER ! by IHC,Positive; HER2 ~ ERBB2 ~ Neu ! by IHC,Negative
Storage:	Store FFPE tissue sections at +4°C.
Stability:	All FFPE tissue sections are stable for 1 year from date of purchase.

**Product images:**

4x Image



20x Image