

## Product datasheet for CS811917

### Tissue FFPE Sections, Lymphoid tissue

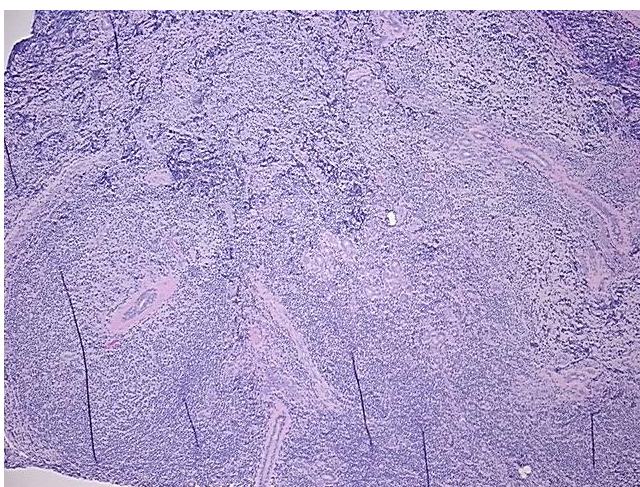
#### Product data:

Product Type:	FFPE Sections
Disease State:	Cancer
Diagnosis Category:	Lymphoma
Tissue:	Lymphoid tissue
Frozen Sample ID:	PA00009649
Case ID:	CU0000012638
Tissue of Origin:	Lymphoid tissue
Site of Finding:	Lymph node
Appearance:	T
Sample Diagnosis (from Pathology Verification):	Lymphoma, follicular
Normal:	0%
Lesional:	0%
Tumor:	95%
Tumor Hypo/Acellular Stroma:	5%
Tumor Hypercellular Stroma:	0%
Necrosis:	0%
CASE Diagnosis (from medical center path report):	Lymphoma, follicular
Age:	50
Gender:	Male
Tumor Grade:	WHO Grade III
Minimum Stage Grouping:	IE

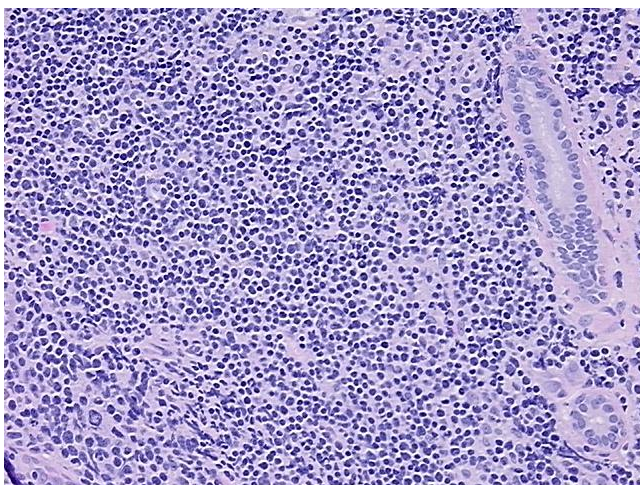


[View online »](#)

T (Extent of Primary Tumor):	Not applicable
N (Lymph node metastasis):	Not applicable
M (Distant metastasis):	Not applicable
Diagnostic Test Results:	BCL2 oncoprotein ! by IHC,Positive; BCL6 oncoprotein ! by IHC,Positive; CD10 ~ CALLA ~ Common ALL antigen ! by IHC,Positive; CD21 ~ CR2 ~ EBV receptor ! by IHC,Positive; CD20 ~ B1 ~ Leu16 ! by IHC,Positive
Storage:	Store FFPE tissue sections at +4°C.
Stability:	All FFPE tissue sections are stable for 1 year from date of purchase.

**Product images:**

4x Image



20x Image