

## Product datasheet for **CS811838**

### Tissue FFPE Sections, Lymphoid tissue

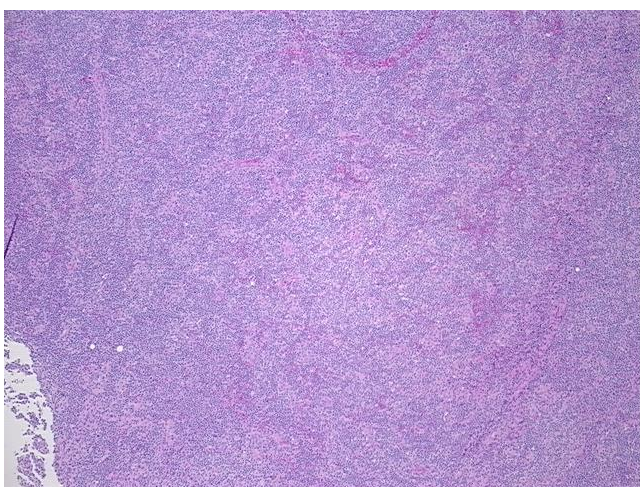
#### Product data:

Product Type:	FFPE Sections
Disease State:	Cancer
Diagnosis Category:	Lymphoma
Tissue:	Lymphoid tissue
Frozen Sample ID:	PA15477AD4
Case ID:	CU0000012602
Tissue of Origin:	Lymphoid tissue
Site of Finding:	Lymph node
Appearance:	T
Sample Diagnosis (from Pathology Verification):	Lymphoma, lymphoplasmacytic
Normal:	0%
Lesional:	0%
Tumor:	95%
Tumor Hypo/Acellular Stroma:	5%
Tumor Hypercellular Stroma:	0%
Necrosis:	0%
CASE Diagnosis (from medical center path report):	Lymphoma, lymphoplasmacytic
Age:	56
Gender:	Female
Tumor Grade:	Not Reported
Minimum Stage Grouping:	I

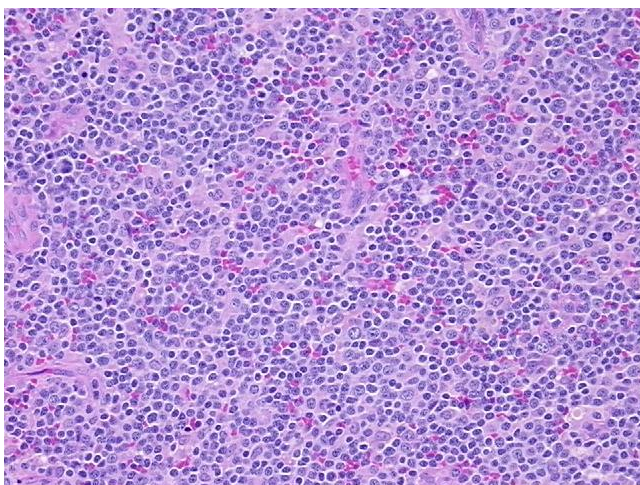


[View online »](#)

T (Extent of Primary Tumor):	Not applicable
N (Lymph node metastasis):	Not applicable
M (Distant metastasis):	Not applicable
Diagnostic Test Results:	CD3 ~ Leu4 ~ UCHT1 ! by IHC,Negative; CD11c ~ Integrin alpha X ~ LeuM5 ! by IHC,Positive; CD19 ~ B4 ~ Leu12 ! by IHC,Positive; CD22 ~ Leu14 ! by IHC,Negative; p53 oncoprotein ~ TP53 ! by IHC,Positive; Ki67 ~ MIB1 ! by IHC,Positive; Kappa
Storage:	Store FFPE tissue sections at +4°C.
Stability:	All FFPE tissue sections are stable for 1 year from date of purchase.

**Product images:**

4x Image



20x Image