

## Product datasheet for **CS811753**

### Tissue FFPE Sections, Breast

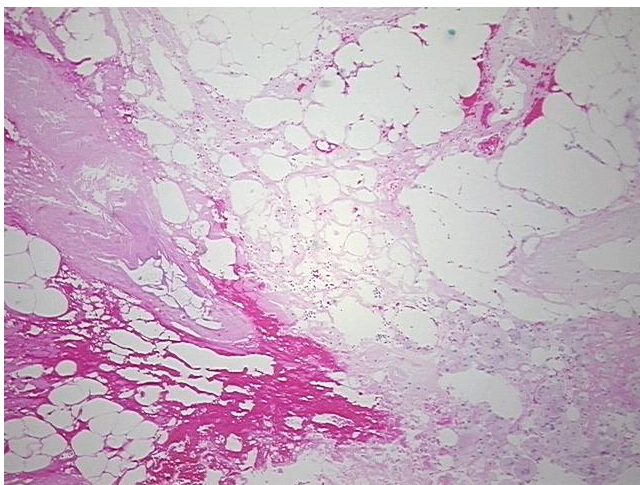
#### Product data:

Product Type:	FFPE Sections
Disease State:	Other Disease
Diagnosis Category:	Biopsy Site Changes
Tissue:	Breast
Frozen Sample ID:	PA00008833
Case ID:	CU0000012245
Tissue of Origin:	Breast
Site of Finding:	Breast
Appearance:	L
Sample Diagnosis (from Pathology Verification):	Biopsy cavity of breast
Normal:	40%
Lesional:	60%
Tumor:	0%
Tumor Hypo/Acellular Stroma:	0%
Tumor Hypercellular Stroma:	0%
Necrosis:	0%
Pathology Verification notes from H&E review:	Inflammation: Mild Macrophages, Mild Mixed inflammatory infiltrate
CASE Diagnosis (from medical center path report):	Adenocarcinoma of breast, ductal, lobular
Age:	76
Gender:	Female
Tumor Grade:	Not Reported

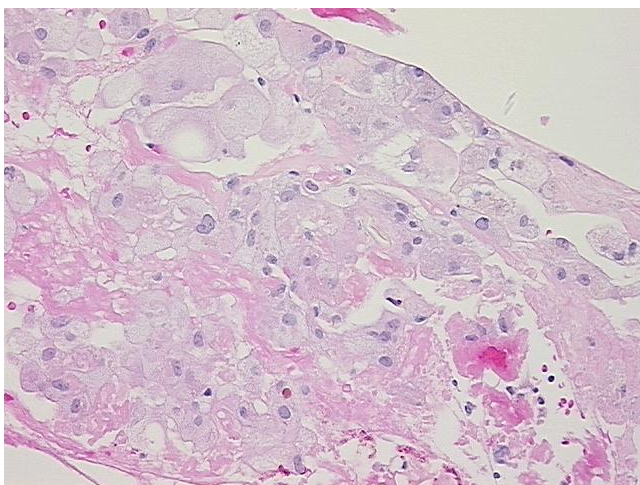


[View online »](#)

Minimum Stage Grouping:	IIA
T (Extent of Primary Tumor):	T1b
N (Lymph node metastasis):	N1a
M (Distant metastasis):	MX
Storage:	Store FFPE tissue sections at +4°C.
Stability:	All FFPE tissue sections are stable for 1 year from date of purchase.

**Product images:**

4x Image



20x Image