

Product datasheet for **CS811436**

Tissue FFPE Sections, Peritoneum

Product data:

| | |
|---|---|
| Product Type: | FFPE Sections |
| Disease State: | Cancer |
| Diagnosis Category: | Peritoneal Cancer |
| Tissue: | Peritoneum |
| Frozen Sample ID: | PA0F335126 |
| Case ID: | CU0000012100 |
| Tissue of Origin: | Peritoneum |
| Site of Finding: | Urinary bladder |
| Appearance: | T |
| Sample Diagnosis (from Pathology Verification): | Carcinoma of peritoneum, papillary serous |
| Normal: | 0% |
| Lesional: | 0% |
| Tumor: | 90% |
| Tumor Hypo/Acellular Stroma: | 5% |
| Tumor Hypercellular Stroma: | 0% |
| Necrosis: | 5% |
| CASE Diagnosis (from medical center path report): | Carcinoma of peritoneum, papillary serous |
| Age: | 42 |
| Gender: | Female |
| Tumor Grade: | FIGO G3: Poorly differentiated |
| Minimum Stage Grouping: | IV |



[View online »](#)

T (Extent of Primary Tumor): T3c

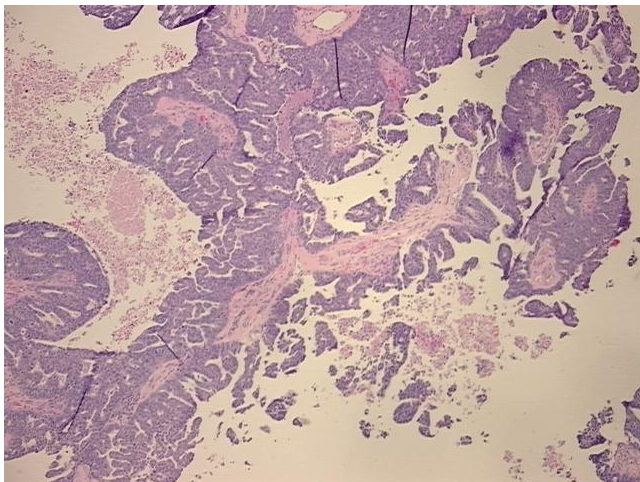
N (Lymph node metastasis): N0

M (Distant metastasis): M1

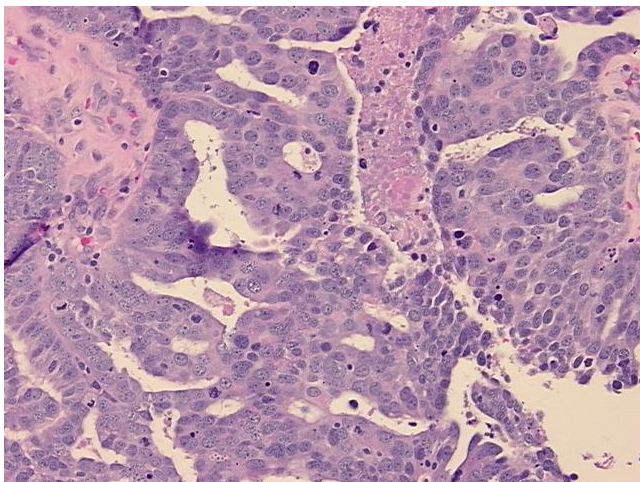
Storage: Store FFPE tissue sections at +4°C.

Stability: All FFPE tissue sections are stable for 1 year from date of purchase.

Product images:



4x Image



20x Image