

## Product datasheet for **CS811168**

### Tissue FFPE Sections, Colon: left

#### Product data:

Product Type:	FFPE Sections
Disease State:	Other Disease
Diagnosis Category:	Inflammatory Bowel Disease (IBD)
Tissue:	Colon
Frozen Sample ID:	PA15477C9E
Case ID:	CU0000011753
Tissue of Origin:	Colon: left
Site of Finding:	Colon: left
Appearance:	L
Sample Diagnosis (from Pathology Verification):	Colitis, ulcerative, chronic active
Normal:	80%
Lesional:	20%
Tumor:	0%
Tumor Hypo/Acellular Stroma:	0%
Tumor Hypercellular Stroma:	0%
Necrosis:	0%
Pathology Verification notes from H&E review:	Non Tumor Structures: 25% Mucosa, 15% Submucosa, 60% Muscle
CASE Diagnosis (from medical center path report):	Colitis, ulcerative, chronic active
Age:	43
Gender:	Female
Diagnostic Test Results:	Cytomegalovirus ~ CMV,Negative

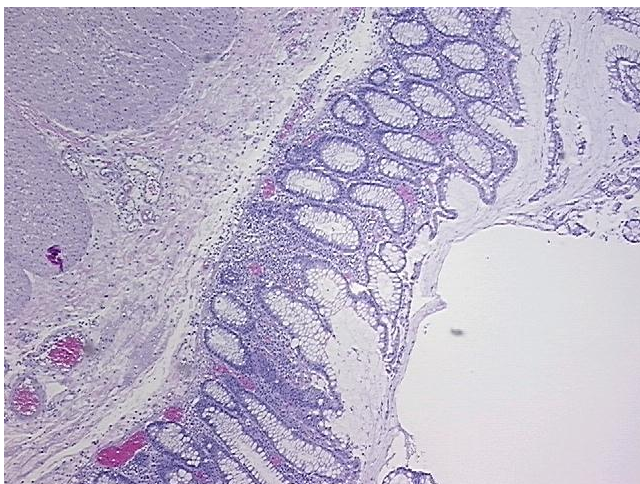


[View online »](#)

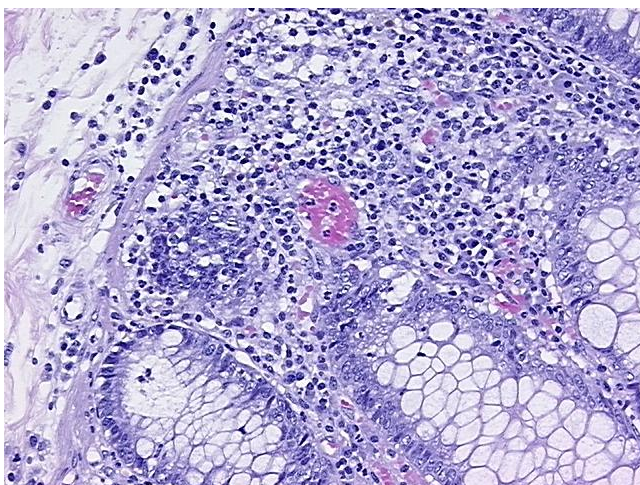
**Storage:** Store FFPE tissue sections at +4°C.

**Stability:** All FFPE tissue sections are stable for 1 year from date of purchase.

**Product images:**



4x Image



20x Image