

## Product datasheet for **CS811064**

### Tissue FFPE Sections, Ovary: left

#### Product data:

Product Type:	FFPE Sections
Disease State:	Other Disease
Diagnosis Category:	Borderline Ovarian Tumor
Tissue:	Ovary
Frozen Sample ID:	PA15477CB6
Case ID:	CU0000011710
Tissue of Origin:	Ovary: left
Site of Finding:	Ovary: left
Appearance:	T
Sample Diagnosis (from Pathology Verification):	Tumor of ovary, serous, borderline
Normal:	0%
Lesional:	0%
Tumor:	65%
Tumor Hypo/Acellular Stroma:	10%
Tumor Hypercellular Stroma:	25%
Necrosis:	0%
Pathology Verification notes from H&E review:	Tumor Stroma (Cellular): Desmoplastic reaction; Tumor Stroma (Hypo/Acellular): Fibrosis
CASE Diagnosis (from medical center path report):	Tumor of ovary, serous, borderline
Age:	54
Gender:	Female
Tumor Grade:	AJCC GB: Borderline malignancy



[View online »](#)

Minimum Stage Grouping: IIIA

T (Extent of Primary Tumor): T3a

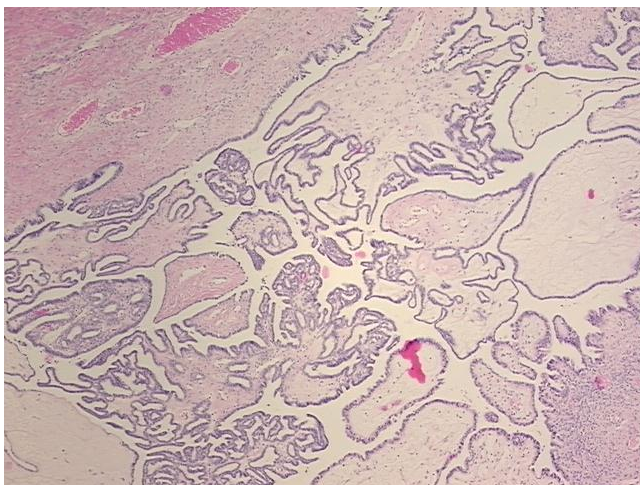
N (Lymph node metastasis): N0

M (Distant metastasis): MX

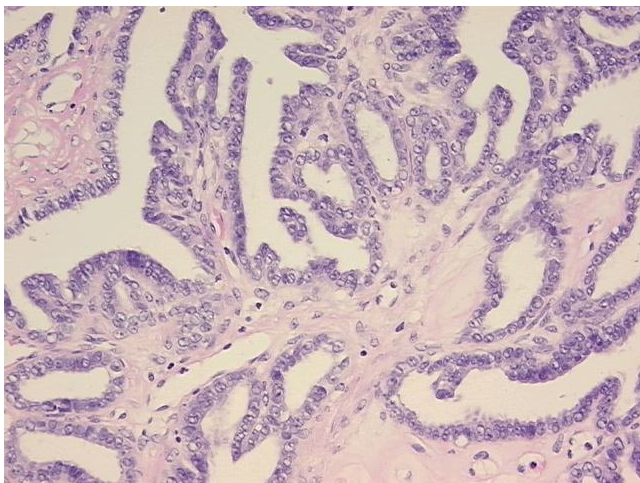
Storage: Store FFPE tissue sections at +4°C.

Stability: All FFPE tissue sections are stable for 1 year from date of purchase.

### Product images:



4x Image



20x Image