

Product datasheet for **CS810992**

Tissue FFPE Sections, Salivary gland

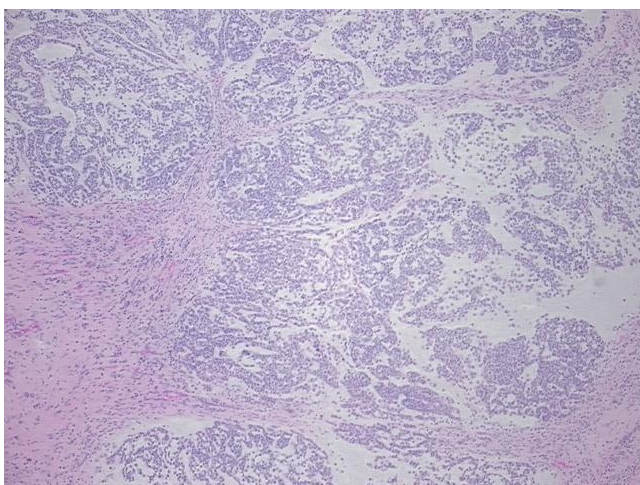
Product data:

Product Type:	FFPE Sections
Disease State:	Cancer
Diagnosis Category:	Mixed Tumor
Tissue:	Salivary gland
Frozen Sample ID:	PA15477944
Case ID:	CU0000011512
Tissue of Origin:	Salivary gland
Site of Finding:	Soft tissue
Appearance:	T
Sample Diagnosis (from Pathology Verification):	Tumor of salivary gland, mixed, metastatic
Normal:	0%
Lesional:	0%
Tumor:	80%
Tumor Hypo/Acellular Stroma:	10%
Tumor Hypercellular Stroma:	10%
Necrosis:	0%
Pathology Verification notes from H&E review:	Patient with multiple distant metastasis of pleomorphic adenoma with atypia
CASE Diagnosis (from medical center path report):	Tumor of salivary gland, mixed, metastatic
Age:	38
Gender:	Female
Tumor Grade:	Not Reported

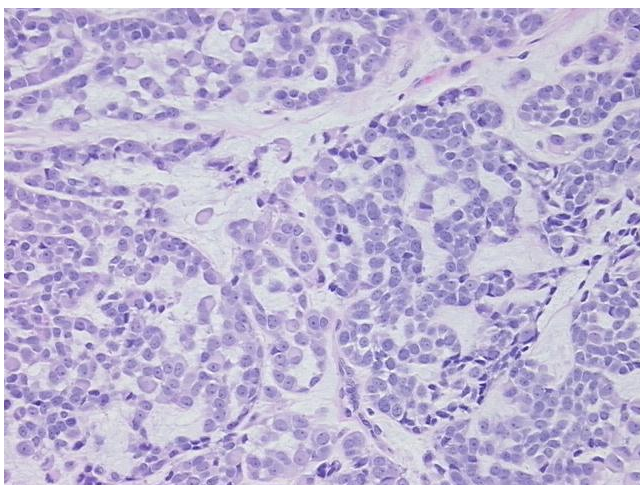


[View online »](#)

Minimum Stage Grouping:	IV
T (Extent of Primary Tumor):	TX
N (Lymph node metastasis):	NX
M (Distant metastasis):	M1
Diagnostic Test Results:	Ki67 ~ MIB1 ! by IHC,Positive; Smooth muscle actin ~ SMA ~ Alpha-SMA ! by IHC,Positive; Vimentin ~ VIM ! by IHC,Positive; S100 protein,Positive; Cytokeratin CAM5.2 ~ CAM5.2 ! by IHC,Positive; Cytokeratin AE1/AE3 ~ AE1/AE3 ! by IHC,Positive; MS
Storage:	Store FFPE tissue sections at +4°C.
Stability:	All FFPE tissue sections are stable for 1 year from date of purchase.

Product images:

4x Image



20x Image