

Product datasheet for **CS810582**

Tissue FFPE Sections, Breast

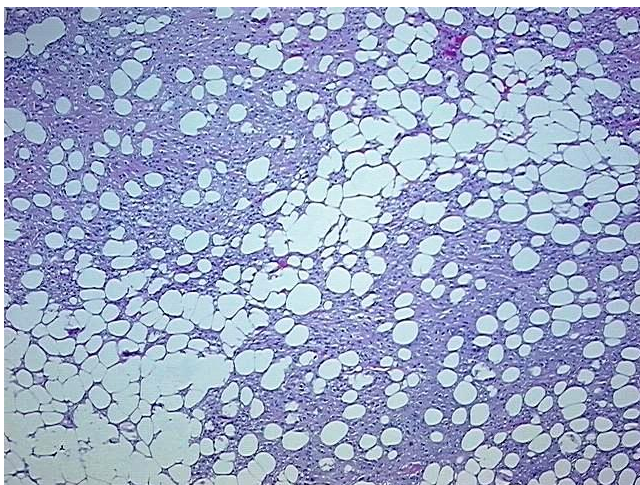
Product data:

Product Type:	FFPE Sections
Disease State:	Cancer
Diagnosis Category:	Breast Cancer
Tissue:	Breast
Frozen Sample ID:	PA000082C8
Case ID:	CU0000011142
Tissue of Origin:	Breast
Site of Finding:	Breast
Appearance:	Tumor
Sample Diagnosis (from Pathology Verification):	Adenocarcinoma of breast
Normal:	5%
Lesional:	0%
Tumor:	25%
Tumor Hypo/Acellular Stroma:	5%
Tumor Hypercellular Stroma:	0%
Necrosis:	65%
Pathology Verification notes from H&E review:	Lobular carcinoma component
CASE Diagnosis (from medical center path report):	Adenocarcinoma of breast
Age:	52
Gender:	Female
Tumor Grade:	Nottingham G3: 8-9 points High combined grade (unfavorable)

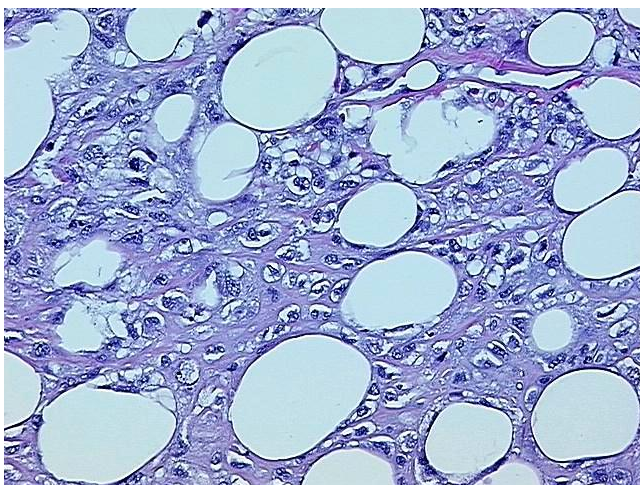


[View online »](#)

Minimum Stage Grouping:	IIIC
T (Extent of Primary Tumor):	pT3
N (Lymph node metastasis):	pN3a
M (Distant metastasis):	pMX
Storage:	Store FFPE tissue sections at +4°C.
Stability:	All FFPE tissue sections are stable for 1 year from date of purchase.

Product images:

4x Image



20x Image