

## Product datasheet for **CS810581**

### Tissue FFPE Sections, Breast, right

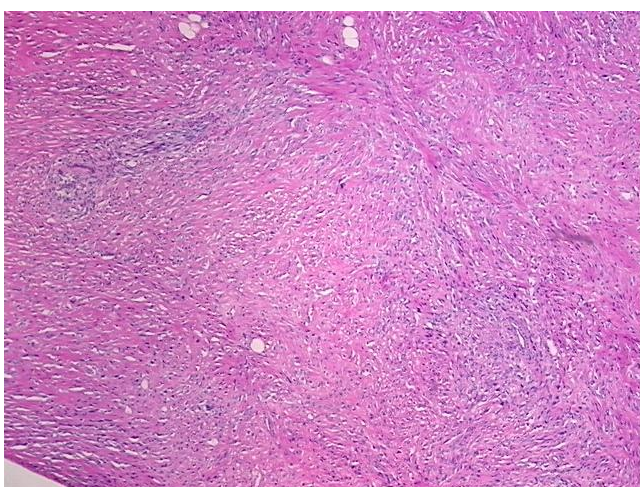
#### Product data:

Product Type:	FFPE Sections
Disease State:	Cancer
Diagnosis Category:	Breast Cancer
Tissue:	Breast
Frozen Sample ID:	PA1547776E
Case ID:	CU0000011142
Tissue of Origin:	Breast, right
Site of Finding:	Breast, right
Appearance:	T
Sample Diagnosis (from Pathology Verification):	Adenocarcinoma of breast
Normal:	0%
Lesional:	0%
Tumor:	10%
Tumor Hypo/Acellular Stroma:	40%
Tumor Hypercellular Stroma:	50%
Necrosis:	0%
Pathology Verification notes from H&E review:	Tumor: multiple features present; Other Features/Comments: tumor: mostly lobular carcinoma component tumor stroma: contains fibrotic cellular stroma and hyalinized acellular stroma.
CASE Diagnosis (from medical center path report):	Adenocarcinoma of breast
Age:	52
Gender:	Female

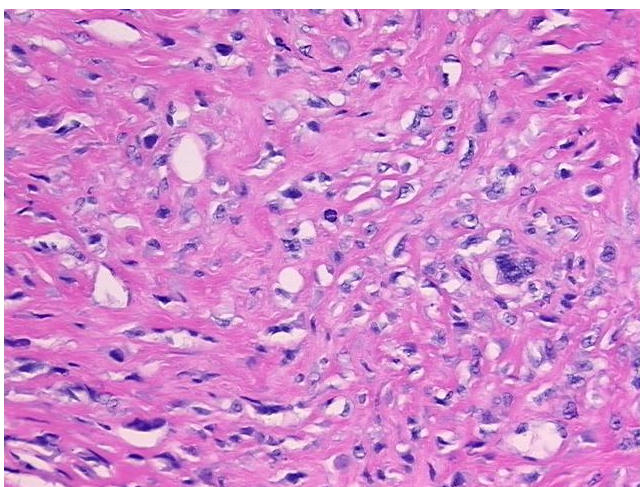


[View online »](#)

Tumor Grade:	Nottingham G3: 8-9 points High combined grade (unfavorable)
Minimum Stage Grouping:	IIIC
T (Extent of Primary Tumor):	T3
N (Lymph node metastasis):	N3a
M (Distant metastasis):	MX
Storage:	Store FFPE tissue sections at +4°C.
Stability:	All FFPE tissue sections are stable for 1 year from date of purchase.

**Product images:**

4x Image



20x Image