

Product datasheet for **CS810573**

Tissue FFPE Sections, Ovary

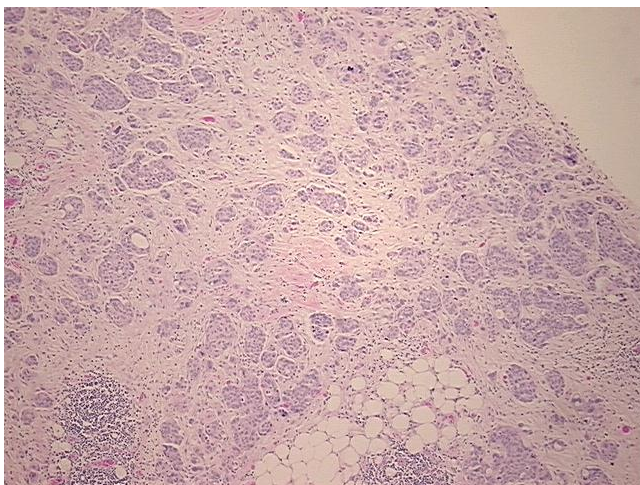
Product data:

| | |
|---|--------------------------------|
| Product Type: | FFPE Sections |
| Disease State: | Cancer |
| Diagnosis Category: | Ovarian Cancer |
| Tissue: | Ovary |
| Frozen Sample ID: | PA15477778 |
| Case ID: | CU0000011140 |
| Tissue of Origin: | Ovary |
| Site of Finding: | Omentum |
| Appearance: | T |
| Sample Diagnosis (from Pathology Verification): | Carcinoma of ovary, metastatic |
| Normal: | 30% |
| Lesional: | 0% |
| Tumor: | 40% |
| Tumor Hypo/Acellular Stroma: | 0% |
| Tumor Hypercellular Stroma: | 30% |
| Necrosis: | 0% |
| CASE Diagnosis (from medical center path report): | Carcinoma of ovary |
| Age: | 77 |
| Gender: | Female |
| Tumor Grade: | FIGO G3: Poorly differentiated |
| Minimum Stage Grouping: | IIIC |

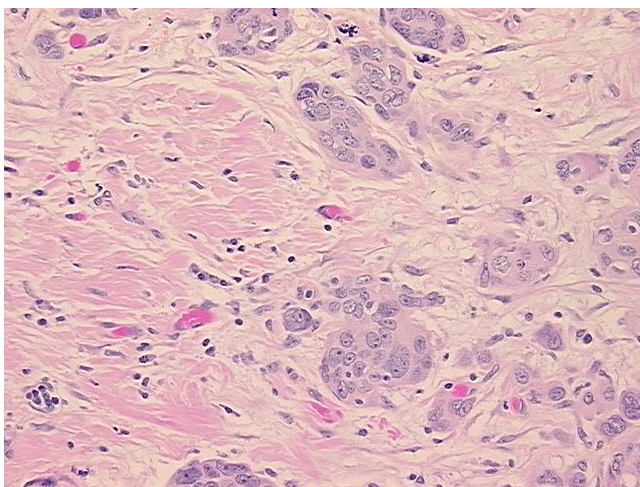


[View online »](#)

| | |
|------------------------------|--|
| T (Extent of Primary Tumor): | T3c |
| N (Lymph node metastasis): | N0 |
| M (Distant metastasis): | MX |
| Diagnostic Test Results: | Cytokeratin 7 ~ CK7 ! by IHC,Positive; Cytokeratin 20 ~ CK20 ! by IHC,Positive, weak |
| Storage: | Store FFPE tissue sections at +4°C. |
| Stability: | All FFPE tissue sections are stable for 1 year from date of purchase. |

Product images:

4x Image



20x Image