

Product datasheet for CS810490

Tissue FFPE Sections, Ovary: left

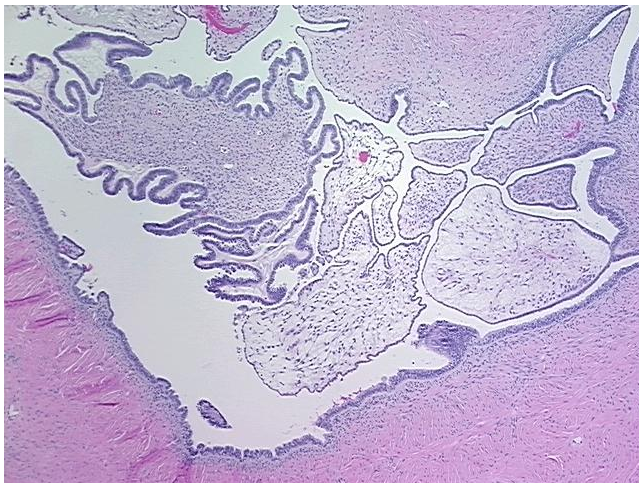
Product data:

Product Type:	FFPE Sections
Disease State:	Other Disease
Diagnosis Category:	Borderline Ovarian Tumor
Tissue:	Ovary
Frozen Sample ID:	PA000082E9
Case ID:	CU0000011128
Tissue of Origin:	Ovary: left
Site of Finding:	Ovary: left
Appearance:	T
Sample Diagnosis (from Pathology Verification):	Cystadenofibroma of ovary, serous, borderline
Normal:	0%
Lesional:	0%
Tumor:	100%
Tumor Hypo/Acellular Stroma:	0%
Tumor Hypercellular Stroma:	0%
Necrosis:	0%
Pathology Verification notes from H&E review:	Tumor: 40% epithelial component, 60% stromal component
CASE Diagnosis (from medical center path report):	Cystadenofibroma of ovary, serous, borderline
Age:	57
Gender:	Female
Tumor Grade:	AJCC GB: Borderline malignancy

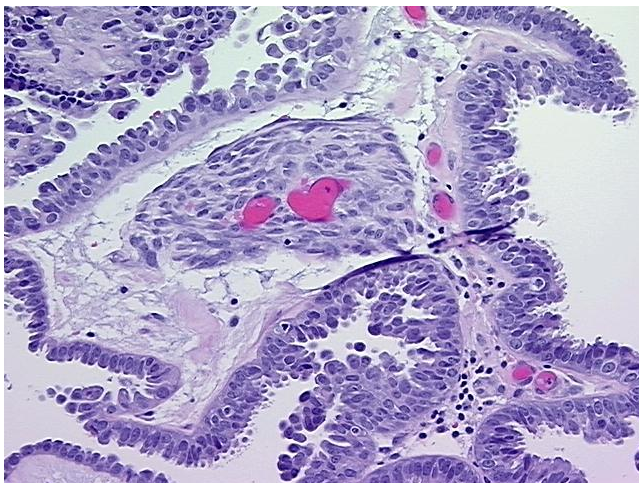


[View online »](#)

Minimum Stage Grouping:	IA
T (Extent of Primary Tumor):	T1a
N (Lymph node metastasis):	N0
M (Distant metastasis):	MX
Storage:	Store FFPE tissue sections at +4°C.
Stability:	All FFPE tissue sections are stable for 1 year from date of purchase.

Product images:

4x Image



20x Image