

## Product datasheet for **CS810489**

### Tissue FFPE Sections, Ovary: left

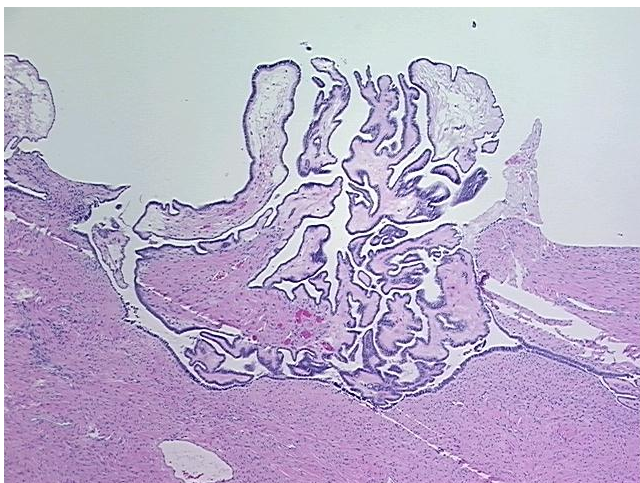
#### Product data:

|   |  |
|---|--|
| Product Type:                                     | FFPE Sections  |
| Disease State:                                    | Other Disease  |
| Diagnosis Category:                               | Borderline Ovarian Tumor                               |
| Tissue:   | Ovary  |
| Frozen Sample ID:                                 | PA154783D3   |
| Case ID:  | CU0000011128   |
| Tissue of Origin:                                 | Ovary: left  |
| Site of Finding:                                  | Ovary: left  |
| Appearance:                                       | T  |
| Sample Diagnosis (from Pathology Verification):   | Cystadenofibroma of ovary, serous, borderline          |
| Normal:   | 0%   |
| Lesional:   | 0%   |
| Tumor:  | 100%   |
| Tumor Hypo/Acellular Stroma:                      | 0%   |
| Tumor Hypercellular Stroma:                       | 0%   |
| Necrosis:   | 0%   |
| Pathology Verification notes from H&E review:     | Tumor: 40% epithelial component, 60% stromal component |
| CASE Diagnosis (from medical center path report): | Cystadenofibroma of ovary, serous, borderline          |
| Age:  | 57   |
| Gender:   | Female   |
| Tumor Grade:                                      | AJCC GB: Borderline malignancy                         |

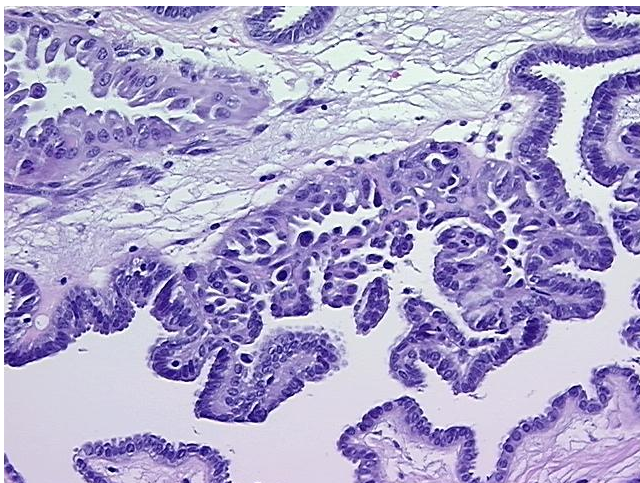


[View online »](#)

|                              |   |
|------------------------------|---|
| Minimum Stage Grouping:      | IA  |
| T (Extent of Primary Tumor): | T1a   |
| N (Lymph node metastasis):   | N0  |
| M (Distant metastasis):      | MX  |
| Storage:                     | Store FFPE tissue sections at +4°C.                                   |
| Stability:                   | All FFPE tissue sections are stable for 1 year from date of purchase. |

**Product images:**

4x Image



20x Image